

Space Time & Research Pvt. Ltd.

An 9001:2008 Certified Company
A CE Certified Company
ROHS Certified Company
HACCP Certified Company
Trade Mark: SPACETIME
Tag Line : Great Innovations to Protect

QUALITY POLICY MANAGEMENT

I, the undersigned, chief executive officer of space time and research pvt. Ltd., am committed to a policy of total quality assurance and excellence and will ensure that this policy is understood, accepted and implemented and maintained throughout the company.

Space Time and Research (P) Ltd. Subscribes the concept and principles of Total Quality Policy.

We as a professional organization which applies the high quality of standards to its products, services, personal and ultimately to end user. We recognize the need to have effective management of quality, which is backed by structured quality management system based on the concept of ISO 9001.

Our objective is to maintain excellence, by using the best technology to set future standards. All departments, management and staff at all levels are committed to ensure adherence to our quality standards. We remain committed to produce QUALITY products, which guarantee the safety standard to the lives at all times. The focus of our business is to remain the customer satisfied while fulfilling its requirements and maintain expectation as well as international standards product.

To achieve this goal, we all remain committed to a continual improvement process gathering data from management review meeting, internal audits, customer feedback / complaints, scrap analysis, customer feedback etc. This data is used to initiate corrective actions through the QMS system leading to improvement to our QMS.

We enhance our product Quality even to all newly acquired products and to all Idea / new products going into the markets in future. We maintained a quality workforce, working as a team to achieve the overall quality and company objectives, In which every individual is developed and motive to their maximum potential and productivity.

Thus we are seen by our customers as a quality organization, our interactions with customers must be focused and have quality and substance to them. Interactions with customers must be frequent, polite and we must be extremely responsive to their needs.

Therefore self and all employees of SPACE TIME AND RESEARCH PVT. LTD. are committed to the enforcement of the quality management system based on ISO 9001 and HACCP License and the official journal of all Indian industries in medical devices and require that all employees of SPACE TIME AND RESEARCH PVT. LTD shall work according to the system, procedures, authorities and responsibilities laid down in the documented

PAWAN GUPTA
Production Manager

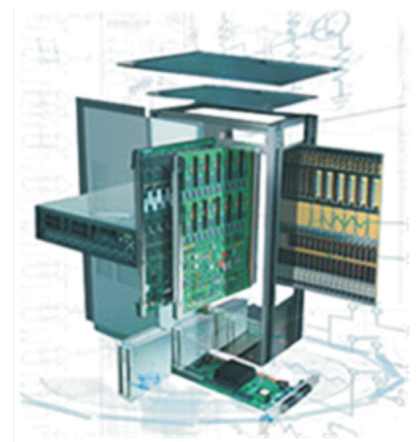
PRAMOD KUMAR
C. E.O. & M.D.



Company Profile

We are the manufacturer behind the brand.

Space Time is a leading electronics contract manufacturer serving the fastest-growing segments of the global Electronics Manufacturing Services (EMS) market. Recognized as a technology leader, Space Time provides end-to-end manufacturing solutions, delivering unsurpassed quality and support to OEMs primarily in the communications, defense, industrial and semiconductor systems, medical instrumentation, multimedia, enterprise computing and storage, and automotive technology sectors. Space Time has facilities strategically located in key regions throughout the world.



Since we began in 2006, Space Time has adhered to a “customer centric” philosophy that puts the customer first and delivers what each defines as value. Today Space Time provides complete end-to-end manufacturing services to companies of all sizes, geographic locations and end markets.

Space Time and Research Pvt. Ltd. is the world's leading manufacturer and distributor in the worldwide market for medical equipment used in the Medical colleges, Hospitals & Industries. The company designs, manufactures, and distributes an extensive line of health care products for the non-acute care environment, including the home health care, retail, and extended care markets.

In initial stage we have a firm but When the company was build in november 2006 by Mr. Pramod Kumar and a small group of investors, it had 36 lacs in net sales and a limited product line of standard wheelchairs, circuit assembling and patient aids.

Today, Space Time and Research Pvt. Ltd. has reached approximately Six crore fifty lacs in net sales and is the leading company in each of the following major, non-acute, medical equipment categories: power and manual wheelchairs, home care bed systems, home oxygen systems and all kind of industry’s R&D equipments.

Space Time and Research Pvt. Ltd. is the only company in the medical equipment industry with a full line of products:

- HVAC Systems
- Microprocessor based Incubators, Microprocessor based oven & Customized intelligent chambers
- Diagnosis Systems
- Online microprocessor based Phmeter, Tds meter, Conductivity meter & Chemistry Analyzers Products
- Respiratory systems
- Oxygen systems, sleep, and nebulizers Products
- Standard Systems
- Autoclave, Suction Machine, Bath safety, walkers, wheelchairs, beds, and therapeutic support surfaces Products
- Industry’s R&D equipments
- Abrasion testers, Microprocessor based Ultrasonic cleaners Products

The company sells its products to over 25,000 health care and medical equipment providers, distributors, and government locations in India and Asia. The company has 900 associates and markets its products in 7 countries around the world. Space Time and research Pvt. Ltd.’s product stock is always ready.

Space Time & Research Pvt. Ltd.

An 9001:2008 Certified company
A CE Certified company
HACCP Certified Company
ROHS Certified Company

INDEX



Air Curtain	22	Rotary Vacuum Evaporator Premium	28
Autoclave (Vertical / Horizontal)	5-6	Rotary Vacuum Evaporator (Buchi Type)	27
B.O.D. Incubator	15	Rotary Vacuum Pump	28
Ball Mill (Laboratory type)	28	Rotavator	27
Biological Safety Cabinet	21	Shaking Machine (Wrist Action)	23
Carbon Dioxide Incubator (Co2 Incubator)	56	Sieve Shaker (Table Top)	25
Centrifuge Machine	34-35	Slide Warming Table	30
Deep Freezer (-20 Deg C ~ -80 deg C)	18-19	Soil Moisture Meter Digital	27
Deionizer	33	Soxhlet Extraction Unit	31
Digital Melting Point Apparatus (Fully Automatic)	26	Steam Sterilizer Horizontal	06-07
Distillation Apparatus	31-32	Test Sieves	26
Elisa Plate Shaker	23	Tissue Culture Hood	22
Fermentor	08	Tissue Flotation Bath	10
Flocculator (Jar Testing Apparatus)	24	Tissue Processing Unit	29
Freeze Dryer (Lyophilizer)	35	Tray Drying Oven (Tray Dryer)	13
Fume Hood Chamber	20	Tube Heating Block / Dry Bath	31
Gel Rocker / Platform	23	Tube Rotor For 36 Tubes	22
Glass Bead Sterilizer	08	Ultrasonic Cleaning Bath (Ultra Sonicator)	29, 55
Glassware Dryer	29	Ultrasonic Probe Sonicator	29
Grain Moisture Meter Digital	27	Universal Shaking Machine	23
Gyratory Sieve Shaker	25	V.D.R.L. Rotator	22
Heating Mantle	31	Vacuum Oven	14
High Precision Thermostatic Water Bath	12	Vacuum-Cum-Pressure Pump	28
Homogenizer (Emulsifier)	25	Vortex Shaker (Test Tube Shaker)	23
Hot Plate Round / Rectangular	30	Wagner's Shaking Machine	23
Hot Water Dip-Plant	10	Walk-In-Incubator	16
Humidity Cabinet (Environmental Chamber)	17	Water Bath (Fully Automatic)	09
Hybridization Oven / Incubator	14	Water Bath Cylindrical	09
Ice Flaking Machine	19	Water Bath Cylindrical (Double Walled)	09
Incubator Bacteriological (Three Sides Elements)	13	Water Bath Incubator Shaker (Metabolic Shaking Incubator)	11
Industrial Oven (Temp Upto 250 Deg C +- 3 Deg C)	12	Water Bath Ultra Low Temperature Bath	10
Infrared Moisture Balance	26	Water Bath Orbital Shaker	11
Inoculation Chamber	22	Water Bath Rectangular	08
Khan (Reciprocating Shaker)	23	Water Bath Refrigerated Circulating	10
Kjeldhal Digestion & Distillation Unit	30-31	Water Bath Serological	09
Laboratory Stirrer	25	Water Still (Distillation)	33
Laminar Air Flow Bench (Horizontal / Vertical)	19-20	Water Still Automatic	32
Magnetic Stirrers	26	Willey Grinder	27
Melting Point Apparatus	26	Wood Moisture Meter	27
Muffle Furnace Rectangular	14		
Multi Magnetic Stirrers	26		
Oil Bath (High Temperature)	10		
Orbital Incubator Shaker (BOD cum Shaker)	16		
Orbital Rotary Shaker (Mini)	24		
Oven & Incubator Combined	14		
Oven Universal (Elements On Three Sides)	12		
Paraffin Wax Dispenser	10		
Pipette Dryer / Washer	29		
Plant Growth Chamber	18		
Polarimeter	29		
Pressure Module	21		
Rotap Sieve Shaker	25		
Rotary Flask Shaker	24		

(H) TISSUE CULTURE EQUIPMENTS

Bio-Tech Heat Convector	38
Conversion of An Ordinary Room Into Tissue Culture Room	38
Culture Bottle with Lid	38
De Humidifier	37
Humidifier	37
Humidity Controller	37
Lux Meter	38
Media Trolley	38
Ozone Generator	38
Par Lamp	36
Petridish	38
Photo Periodic Simulation Castor Rack	36
Photoperiodic Simulator	36
Room Temperature Controller	37
Sequential Timer	36
Test Tube Cap	38

(I) SEED & SOIL TESTING EQUIPMENTS

Air Screen Cleaner Cum Grader	42
Brix Hydrometer with Thermometer	43
Cone Panometer (Hand Operated)	44
Digital Wood Moisture Meter (Lutron)	41
Grain / Rice Sizing Device	41
Grain-Moisture Meter (Model Farmex)	41
Illuminated Purity Work Board	42
Infiltrometer Apparatus	43
Laboratory Indented Cylinder Separator	42
Maize Sheller	42
Portable Bag Closer	42
Rice Testing Mill (Rice Polisher)	40
Riffle Divider	42
Seed Analysis Kit	42
Seed Blower	41
Seed Cabinet (For Storage Of Seed)	41
Seed Counter (Digital)	41
Seed Display Stand	41
Seed Dryer	40
Seed Grader (Lab Model)	41
Seed Germinator	39-40
Seed Size Analyzing Dial Caliper	42
Soil Auger	43
Soil Core Sampler	43
Soil Hydrometer	44
Soil Moisture Meter	43
Soil Moisture Sample Box	43
Soil Thermometer	43
Tensiometer	42
Testing Husker	40

(J) AUTOMATIC / SERVO VOLTAGE STABILIZERS 44

(K) PHARMACEUTICAL EQUIPMENTS

Ampule Sealing & Filling Machines	45
Ampule Washing Machine	45
Bulk Density Apparatus	45
Coating Pan (Size 12" Dia)	45
Collapsible Tube Filling Machine	45
Dissolution Rate Test Equipment	45
Mixing Vat With Stirrer	45
Polishing Pan (Size 12" Dia)	45
Tablet Distegration Test Apparatus	44
Tablet Friability Test Apparatus	44
Tablet Hardness Tester (Pfizer / Monsanto Type)	44
Tube Filling / Sealing Machine	45
Elisa Reader / Washer	45
Biochemistry Analyzer	46

(L) ANALYTICAL INSTRUMENTS

Colony Counter	52
Conductivity / TDS / Salinity Meters	50-51
Digital Dissolved Oxygen Meter	54
Flame Photometer	53
KF Titrimeter	52
Microscope	54
Ph Meters / Potentiometers	49-50
Photo Colorimeters / Haemoglobinmeter	48
Pyrogen Testing Instruments	53
Turbidity / Nephelometers	52
Spectrophotometer	46-48
Water / Soil Testing Instruments	50

(M) LABORATORY BALANCES 54-55

(N) ELECTROPHORESIS UNIT (VERTICAL / HORIZONTAL) WITH POWER PACK, E-BLOTTER COMPLETE SYSTEM & UV-TRANSILLUMINATOR 56-58

(O) PCR / GEL DOC SYSTEM 58

(P) MICROTOME / KNIFE SHARPENER / TISSUE PROCESSOR 59

CAT. NO.	DESCRIPTION OF ITEM	PRICES (PER UNIT) IN RUPEES
----------	---------------------	--------------------------------

STAR-01 AUTOCLAVE PORTABLE (COOKER TYPE)

Autoclave vertical type electrically heated with air release nozzle with gasket, lid, safety valve, pressure gauge, tripod stand, stainless steel / Aluminum inner basket, steam release cock etc.

Size (Dia x Depth)	Made of Aluminum	Made of S.S.
300 x 300 mm	9900/-	15400/-
300 x 375 mm	12600/-	18000/-



STAR-01

STAR-02 AUTOCLAVE (VERTICAL)

Autoclaves are mainly based on the principal of saturated steam sterilization, Used for sterilization of rubber, utensils, Linen, plastic, dressing material, surgical items, glass wares, lab wares etc. It is used in scientific research institutions, universities, hospitals, mushroom centers, tissue culture labs etc.

“SPACE TIME” Autoclave is made of double walled sturdy construction, Inner chamber (i.e. boiler) made out of 16 SWG stainless steel of 304 grade quality, The outer shell is made out of thick mild steel duly painted for longer durability of equipment. The boiler and outer shell is provided with air insulation. Lid is made of thick mild steel duly stainless steel lined and is tightened by Radial locking system for safe operation of equipment. Lid is mounted on a central screw and is provided with best quality joint less neoprene gasket to avoid any risk and trouble free operation.

The paddle lifting device is fitted for the opening & closing of the lid. These Autoclaves are fitted with glass indicator to indicate the water level inside the boiler, pressure gauge, steam release cock, safety valves, spring loaded safety valves, drain valve etc for the safety & easy operation of equipment. The autoclave is hydraulically tested up to 40 PSI & can be set at any pressure in between the 5 to 22 p.s.i.

Heating is maintained by ISI mark heating elements which are easily replaceable and heats the water to desired temperature and pressure. Pressure is indicated by pressure gauge. Supplied complete with stainless steel perforated basket, cord plug to work on 220 V +/- 9% 50 Hz, single phase.



STAR-02

STAR-03 --Same-- as above but the Outer chamber and lid made of Stainless Steel.

Size (Dia x Depth)	Electric Load	Capacity	STAR-02	STAR-03
250 x 450 mm	(1.5 KW)	22 ltr	28900/-	35000/-
300 x 500 mm	(2 KW)	40 ltr	32000/-	41500/-
350 x 550 mm	(3 KW)	50 ltr	37300/-	44000/-
400 x 600 mm	(4 KW)	70 ltr	57900/-	67500/-
450 x 600 mm	(4 KW)	98 ltr	62400/-	72500/-
550 x 750 mm	(5 KW)	178 ltr	82300/-	96500/-
600 x 1200 mm	(7 KW)	340 ltr	143300/-	163000/-
750 x 1200 mm	(7 KW)	530 ltr	172000/-	211000/-
900 x 1200 mm	(9 KW)	760 ltr	264000/-	298500/-



STAR-04

OPTIONAL ACCESSORIES

- Automatic Pressure Control switch is provided for controlling the pressure automatically on preset pressure value (Piezostat) 5500/-
 - Digital Temperature indicator 5400/-
 - Digital Timer 4000/-
 - Automatic low water level cut off device 3000/-
 - Automatic System (Omitting the options of Digital Temp. Indicator, Timer, Piezostat) Programming with PID 4 Program Keys, 16x2 line LCD/LED Display, One start/stop key, Pt 100 3 wire Sensor, Automatic soak, Purge, exhaust setting, auto low water cut of, high-low alarm set 25300/-
 - Data Logger for Data Transfer to PC including features of Point 5 39000/-
 - Neoprene Gasket
- | Dia | 250mm | 300mm | 350mm | 400mm | 450mm | 500mm |
|-----|-------|-------|-------|-------|-------|--------|
| | 540/- | 600/- | 660/- | 720/- | 960/- | 1080/- |
- Spare Heating Elements

Capacity	1.5 KW	2.0 KW	3.0 KW
	500/-	600/-	750/-
 - Fully Automatic system with touch screen PLC Based data logger system with memory 253000/-

STAR-04 AUTOCLAVE VERTICAL HIGH PRESSURE (TRIPLE WALLED)

Sturdy Construction, Triple walled with inner chamber, outer wall and jacket made of stainless steel of 304 grade fitted with stainless steel lid and radial type locking device. The space between steam

CAT. NO.	DESCRIPTION OF ITEM	PRICES (PER UNIT) IN RUPEES
----------	---------------------	--------------------------------

jacket and outer wall is filled with glass wool. Automatic pressure control switch is provided for controlling the pressure automatically on preset pressure value (i.e. Piezostat). Fitted with Automatic low water level cut off device.

Size Dia x Depth	Electric Load	Capacity	Price
250 x 450 mm	3 kw	22ltr	78300/-
300 x 500 mm	4 kw	40ltr	84500/-
350 x 550 mm	4 kw	50 ltr	97500/-
400 x 600 mm	5 kw	78 ltr	156500/-
450 x 600 mm	6 kw	98 ltr	162500/-
550 x 750 mm	6 kw	178 ltr	214000/-

OPTIONAL ACCESSORIES

- 1. Arrangement for dry sterilization at the extra cost of **14500/-**
- 2. Digital Temperature indicator **5400/-**
- 3. Digital Timer **4000/-**

STAR-05 (A) AUTOCLAVE HORIZONTAL {CYLINDRICAL}

Double walled construction. The outer walls are made of Heavy Duty Mild steel duly enamel painted & the inner chamber is made out of thick stainless steel, Whole unit is mounted on Mild steel tubular stand (Frame) duly enamel painted. Door is made of heavy mild steel duly S.S. lined with radial locking system having horizontal middle steel bars duly chromed tightened on a central screw. Steam generator (Boiler) is placed below the main unit & is made of thick stainless steel. Boiler is provided with easily replaceable heating elements and is fixed at the base of M.S. frame. These autoclaves are fitted with steam release cock, safety valves etc. boiler is fitted with water level indicator & Automatic low water level cut off device. These autoclaves are provided with automatic pressure switch / piezostat for controlling pressure at preset value Workable pressure 10 to 20 p.s.i. +- 3p.s.i. and hydraulically tested upto 40 p.s.i. suitable to work on 440 V 3 phase or 220 V single phase as per requirement..

STAR-05 (B) Same as above but Outer Chamber and lid made of Stainless steel.

Available in following sizes.

Size (Dia x Depth)	Price for STAR-05 (A)	Price for STAR-05 (B)
250 x 450 mm	87300/-	102900/-
300 x 500 mm	98300/-	118300/-
350 x 550 mm	122600/-	133000/-
400 x 600 mm	164600/-	188900/-
450 x 600 mm	188900/-	212600/-
550 x 750 mm	234800/-	255000/-
400 x 1100 mm	202600/-	232300/-
500 x 1200 mm	276900/-	298990/-

OPTIONAL ACCESSORIES

- 1. Circular type thermometer to check the temperature at the extra cost **1100/-**
- 2. Digital Timer **4000/-**
- 3. Digital Temperature indicator **5400/-**

STAR-06 STEAM STERILIZER HORIZONTAL (TRIPLE WALLED) WITH STEAM JACKET (HIGH PRESSURE CYLINDRICAL)

This sterilizer is based on the principal of downward displacement of air which is most economical method of obtaining the sterilization.

Triple walled construction with rugged and leak proof chambers. The Inner & outer chamber is made of thick plate of stainless steel 304 quality. The steam jacket is lined on the outer side and made of 304 quality stainless steel with asbestos sheet or glass wool which prevents heat losses due to radiation and is covered by strong rolled steel sheet duly painted. Boiler is made from thick stainless Steel sheet suitable located under the sterilizer. High grade flanged type heating elements are placed



STAR-05



STAR-06

CAT. NO.	DESCRIPTION OF ITEM	PRICES (PER UNIT) IN RUPEES
----------	---------------------	--------------------------------

in the from side for easy replacement etc. fitted with water gauge made of glass for water level, safety valve, water inlet and drain valves. These steam sterilizers are fitted with self locking safety door which cannot be opened when the chamber is under pressure. Single Door System.

The clutch mechanism automatically disengages the threads of the radial locking system for precluding any eventuality of accident when the chamber is under pressure. A heat resistant neoprene rubber gasket is provided for totally safety of the instrument. Provided with electrically operated **PIEZOSTAT**, which economics the power consumption the limits the use of release valve Which would frequently blow steam into the room. It cuts off the power supply to heaters when the set pressure is achieved and re-energizes the heater when pressure falls down.

Two separate valves are provided for evacuating air and steam from inner chamber and jacket. A steam trap is fitted in the chamber discharge line to eliminate the condensate automatically. Panel consist of pressure control switch, main on/off switch, indicators, relays etc. the sterilizer is provided with triple safety. First with pressure control switch, two nos. spring loaded safety valves, and a dead weight safety valve. A **PLUG SCREEN** prevents the discharge line from choking. And it can easily be removed for cleaning. A power full ejector circulates the air throughout the chamber.

OPERATING TEMPERATURE	PRESSURE	LOAD
121 deg C	1.2 to 2 kg./sq. Cm.	6.0 to 12.0 KW

Size (Dia x Depth)	Price
250 x 450 mm	198500/-
300 x 500 mm	206300/-
350 x 550 mm	212500/-
400 x 600 mm	254000/-
400 x 1100 mm	296500/-
550 x 750 mm	298500/-
500 x 1200 mm	395500/-
600 x 1200 mm	397500/-

OPTIONAL ACCESSORIES: Double Door System 34000/-

STAR-07 STEAM STERILIZER RECTANGULAR HIGH PRESSURE

"**SPACE TIME**" Rectangular Steam Sterilizer is same as cylindrical high pressure steam sterilizer but in rectangular shape. Outer shell made of heavy duty 304 grade stainless steel & inside chamber is made of thick stainless steel, triple walled. Door made of thick stainless steel. Properly insulated steam generator is made of heavy duty stainless steel. This steam sterilizer is fitted with pressure control device (i.e. piezostat). It cut off the power supply to heaters when the set pressure is achieved and re-start the heating elements when pressure falls below the set point. These **PIEZOSTAT**, economics the power consumption and limits the use of release valve which would frequently blow steam into the room. It cuts off the power supply to heaters when the set pressure is achieved and re-energizes the heater when pressure falls down.

The Boiler is made of thick stainless steel sheet suitable located under the sterilizer. High grade flanged type heating elements are placed in side the boiler for easy replacement fitted with water gauge made of glass for water level, safety valve, water inlet and drain valves.

"**SPACE TIME**" Steam Sterilizer is provided with self locking safety door which cannot be opened when the chamber is under pressure. The clutch mechanism system automatically disengages the threads of the radial locking system for precluding any eventuality of accident when the chamber is under pressure. A heat resistant neoprene rubber gasket is provided for totally safety of the instrument.

Two separate valves are provided for evacuating air and steam for inner chamber and jacket. A steam trap is fitted in the chamber discharge line to eliminate the condensate automatically. Panel consist of pressure control switch, main on/off switch, indicators, relays etc. the sterilizer is provided with triple safety. First with pressure control switch, two nos. spring loaded safety valves, and a dead weight safety valve. A **PLUG SCREEN** prevents the discharge line from choking. And it can easily be removed for cleaning. A power full ejector circulates the air throughout the chamber.

OPERATING TEMPERATURE AND PRESSURE:
121 deg C, 1.2 to 2 kg./sq. Cm. LOAD: 6.0 to 18.0 KW



STAR-07

CAT. NO.		DESCRIPTION OF ITEM		PRICES (PER UNIT) IN RUPEES	
Size (WxHxD)mm	Cap. (Ltrs.)	Single Door	Double Door	S.S. Carriage	M.S. Trolley
450x450x900	180	434000/-	464000/-	39000/-	19000/-
450x600x900	240	444000/-	478500/-	41000/-	21500/-
600x600x900	320	474000/-	552000/-	46000/-	22500/-
600x600x1200	430	686000/-	776000/-	50000/-	25000/-
600x750x1200	540	1299000/-	1554000/-	58500/-	30000/-
600x900x1500	810	1549000/-	1798000/-	64500/-	32000/-

STAR-08 GLASS BEAD STERILIZER

31500/-

For use in Biotechnology/Tissue culture research and production. These are compact stainless steel units, and can be placed on laminar air flow benches. Glass bead sterilizers are quick, easy and accurate alternatives to traditional methods of sterilization. This destructs all micro organisms within seconds. Once switched "ON" the unit becomes ready with in 30 minutes and ensures total sterilization. These are fitted with an imported thermostat, which maintains the set temperature with an accuracy of +1 of the preset temperature range which is 245 deg C – 250 deg C.

Cabinet Size : 150 x 155 x 225 mm (LxWxH) (Approx)
Crucible (Brass) size : 2" dia x 5 1/2" depth



STAR-08

STAR-09 FERMENTOR

"SPACE TIME" Fermentor unit is designed for easy handling. It is simple to use and combines practical aspects with low costs Sturdy construction, outer shell, Inner chamber and steam jacket made of thick 16 gauge stainless steel. Lid is also made of stainless steel and is tightened by screws and is provided with best quality joint less neoprene gasket to avoid any risk and trouble free operation. Air insulation is provided with boiler and outer shell. The Heating is done with an ISI mark heating element. These Fermentor are Fitted with water level indicator to indicate the water level inside the boiler, steam release cock, Pressure gauge, drain valve, spring loaded safety valves etc. pressure is maintained in between 5 to 22 p.s.i.. Which is indicated by pressure gauge, line air filter. Outer two jackets are provided with copper/SS coil for water re-circulation with auto pressure cutoff device. Provided with air compressor for aeration in Fermentor.

Capacity:

50 liters
 100 liters
 150 liters
 200 liters

273000/-
 373000/-
 497900/-
 648000/-



STAR-09

STAR-10 WATER BATH RECTANGULAR (SINGLE WALLED)

These water baths are made of best quality thick stainless steel. Electrically operated, complete with concentric rings wire plug, etc. provided with drainage facility. Concentric rings have the 75 mm dia. thermostatically controlled, heating elements have an automatically cut-off device. Temperature controlled by energy regulator.

Available In following sizes:

Available In following sizes:	Ltr.	Price
300 x 250 x 100 mm (6 holes of 75 mm dia)	8 ltrs	3800/-
300 x 350 x 100 mm (9 holes of 75 mm dia)	12 ltrs	5700/-
350 x 400 x 100 mm (12 holes of 75 mm dia)	15 ltrs	6900/-

STAR-11 WATER BATH RECTANGULAR (DOUBLE WALLED)

"SPACE TIME" water bath represent an ideal combination of practical applicability, distinctive technology & modern design. They are commonly used in the field of biochemistry applied chemistry, biology & microbiology. These water bath are Double walled, inner shell made of 304 grade thick stainless steel and outer body made of mild steel duly powder coated for longer durability. Top made of stainless steel with 75 mm thick holes with concentric rings. The inner & outer shell is provided with thick polyurethane insulation to prevent any heat loss. Temperature can be maintained from ambient to 95 deg C which is thermostatically controlled In case of Digital Controller) fitted with Neon Lamp, indicator main switch and workable on 220 V. 50Hz single phase AC. Provided with drain and port for thermometer. Inner chamber made of stainless steel.



STAR-10

CAT. NO.	DESCRIPTION OF ITEM	PRICES (PER UNIT) IN RUPEES
----------	---------------------	--------------------------------

SIZE	Ltr	Price
300 x 250 x 100 mm (6 holes of 75 mm dia)	8 ltrs	6500/-
300 x 350 x 100 mm (9 holes of 75 mm dia)	12 ltrs	7500/-
350 x 400 x 100 mm (12 holes of 75 mm dia)	15 ltrs	8500/-

OPTIONAL ACCESSORIES:

1) Stirrer with Motor and speed regulator	4000/-
2) Digital Temperature indicator cum controller (with an accuracy of +/- 0.5 deg C,	6000/-

STAR-12 WATER BATH CYLINDRICAL
Single walled, electrically operated, Made of thick Stainless Steel with concentric rings. Temp. range from ambient to 100 deg C with an accuracy of +/- 1 deg C and is controlled by thermostat

200 x 150 mm (Dia x Depth)	3500/-
250 x 250 mm (Dia x Depth)	4500/-

STAR-13 WATER BATH CYLINDRICAL (DOUBLE WALLED)
Double walled with inner made of stainless steel, outer of heavy mild steel duly powder coated. Insulation is made with thick glass wool. Fitted with concentric rings, thermostat controlled. Temperature can be maintained up to 100 deg C

Available in following sizes:

200 x 150 mm	5900/-
250 x 250 mm	6900/-

OPTIONAL ACCESSORIES

Digital Temperature indicator cum controller (with an accuracy of +/- 1 deg C.)	6000/-
---	--------

STAR-14 SEROLOGICAL WATER BATH
These units are double walled with inner chamber made up of S.S. sheet and outside of M.S. duly powder coated. The gap between the walls is filled with special grade glass wool in order to avoid thermal losses A drain plug is also fitted to the unit. The inner chamber fitted with tubular type heating element is covered with perforated removable S.S. tray. Temperature from ambient to 100 deg C is controlled by "IMPORTED THERMOSTAT" hydraulic capillary type thermostat with an accuracy of +/- 1 deg C. Supplied complete with 220/230 volts A.C. supply. Single phase 50 Hz.

Size (Dia X Depth)

300 x 250 x 175 mm	for 2 racks	6000/-
300 x 300 x 175 mm	for 4 racks	7900/-
455 x 300 x 175 mm	for 6 racks	9900/-
455 x 455 x 175 mm	for 8 racks	12900/-

OPTIONAL ACCESSORIES

a) STIRRER with 1.20 HP Motor and speed regulator	4000/-
b) Digital Temperature indicator cum controller	6000/-

STAR-15 WATER BATH (FULLY AUTOMATIC)
Double walled, inner & outer chamber made of Stainless Steel, Lid is also made of S. Steel, The inner & outer chamber is insulated with glass wool to prevent any heat loss. Temp. is maintained from ambient to 100 deg C and digitally controlled by digital temp. indicator cum controller with an accuracy of 0.5 deg C. Heating is done by heating elements with in-built water circulator. Fitted with a automatic low level water cut off device to auto cut the heater. It is have a special feature of detachable panel with all the arrangement like heaters, circulator, low high cutoff device, fuse etc. are in the panel itself.

10" x 10" x 7" (W x L x D)	32900/-
12" x 10" x 7" (W x L x D)	35300/-
15" x 12" x 7" (W x L x D)	38300/-



STAR-11



STAR-13



STAR-14

CAT. NO.	DESCRIPTION OF ITEM	PRICES (PER UNIT) IN RUPEES
STAR-16	REFRIGERATED CIRCULATING WATER BATH	92500/-
	These water baths are conceived for the most demanding applications. They are maintenance free and are suitable for prolonged testing. Outer body is made of thick mild steel sheet duly powder coated painted for longer durability and inner chamber is made up of 304 grade stainless steel. Lid is also double walled properly insulated and is provided with locking facility. Whole unit is mounted on a sturdy angle iron frame the cooling coils are brazed to the outer side of S.S. chamber thus ensuring perfect and uniform cooling. Insulation is done with thick glass wool to prevent any heat loss. For attaining the temperature below ambient, the refrigeration is done through CFC FREE hermetically sealed compressor and & for attaining the temperature above ambient, heating is done with immersion type heating element. Temperature range is from 5 deg to 90 deg C is controlled by digital temp. indicator cum controller with an accuracy of +- 0.5 deg C. A stirrer is fitted to maintain the temperature uniformity through out the working chamber. Chamber Size: 500 x 250 x 250 mm (WxDxH). The unit is also fitted with a FHP PUMP for circulating the cooled liquid to an external source such as condenser coils, etc. Works on 220/230 volts AC supply	
	OPTIONAL ACCESSORIES	
	Microprocessor PID digital temperature indicator-cum-controller	8000/-
STAR-17	ULTRA LOW TEMP. LIQUID BATH	108900/-
	Same as above but with temp. range from ambient to -20 degree C	
STAR-18	PARAFFIN WAX DISPENSER	15300/-
	Double walled construction, The inner and outer walls are made out of heavy stainless steel and the gap between the two walls is filled with high grade mineral wool.. Temperature is maintained from ambient to 70 deg C is controlled through a hydraulic type capillary thermostat. Melted wax can be drained out through a tap in which the temperature can also be controlled. This is used for making wax embedded blocks. The unit operates of 220/230 volts AC supply. Capacity 2 lit. of wax	
STAR-19	TISSUE FLOTATION BATH	8900/-
	Double walled construction, The inner made of Aluminum/steel duly black painted and outer wall made of mild steel sheet duly power coated. The temperature is thermostatic control from ambient to 80 deg C with an accuracy of +- 1 deg C, complete with indicators, cord & plug to work on 220 / 230 V AC. (Prices without thermometer). Dia x Depth: 250 mm x 125 mm Thermometer can be provided at an extra cost	730/-
	OPTIONAL ACCESSORIES	
	a) STIRRER with 1.20 HP Motor and speed regulator	4000/-
	b) Digital Temperature indicator cum controller	6000/-
STAR-20	HOT WATER DIP-PLANT	229900/-
	Basically it is required for pre heat treatment of fruits (mango etc.,). It is generally used in between 47 deg C to 52 deg C. Double walled, inner made of stainless steel, outer made of heavy duty mild steel duly powder coated. Properly insulated. Heating elements are tubular type, made of copper duly nickel plated. Covered with perforated S.S. tray. Temperature range is from ambient to 70 deg C controlled by digital temperature indicator cum controller with an accuracy of +- 1 deg C. Provided with water pump for circulation of water to maintain the uniformity of temperature in the chamber. Mounted on castor wheels. Lid is also made of thick stainless steel. Provided with on/off switch, indicator, cord plug, etc. Suitable to work on 220 V single phase 50 Hz AC. Size (Dia x Depth): 6ft x 3ft x 3ft	
	---do-same as above but with inner & lid made of stainless steel	257000/-
STAR-21	OIL BATH (HIGH TEMPERATURE)	
	Suitable for a wide range of application, such as oxidation test on oils, greases, etc. or any other test requiring high temperature control Double-walled sturdy construction with inner chamber made of stainless steel and outer walls made of mild steel. Temperature is maintained from the range of 50	



STAR-16



STAR-18



STAR-19



STAR-21



Great Innovations to Protect

CAT. NO.	DESCRIPTION OF ITEM	PRICES (PER UNIT) IN RUPEES
----------	---------------------	-----------------------------

deg C to 250 deg C which is controlled by Electronic digital temperature controller cum indicator with an accuracy of + -1 deg C. Complete with stirrer, diffuser shelves, and stainless steel cover. To work on 220/230 V AC.

Size inside chamber

250 x 250 x 250 mm	27300/-
300 x 300 x 250 mm	29300/-
350 x 350 x 250 mm	41300/-

OPTIONAL ACCESSORIES

Microprocessor PID digital temperature indicator-cum-controller	8000/-
---	--------

STAR-22 WATER BATH INCUBATOR SHAKER (METABOLIC SHAKING INCUBATOR)

It is a double walled unit with inside made of thick S.S. sheet and outer of M.S. sheet duly enamel painted. The pyramid lid made of S.S. prevents falling of condensed water droplets on the specimens. Heating is achieved through a immersion type heater and the temperature is controlled by thermostat hydraulic type thermostat with an accuracy of +-0.5 deg C. The bath has an oscillating tray riding on ball rollers oscillated through a geared variable speed motor. Shaking speed range is between 40 to 140 cycles per minute. The shaking tray can either hold test tubes or erlynmeyer flasks of 25 ml or 50 ml or 100 ml or 150 ml or 500ml or 1000ml. as ordered by the users. (Kindly mention the capacity of the flasks while ordering). Supplied complete with one shaking tray, pyramidal cover, L-shaped thermometer cord and plug, to work on 220/230 volts A.C. supply. Available with heating arrangement only (having temperature range from ambient to 100 deg C) or with both heating and cooling arrangement (having temperature range from 5 deg C to 100 deg C with digital temperature indicator cum controlled with an accuracy of +-1 deg C.



STAR-22

Shaking tray size inside S.S.	With Heating	With Heating & Cooling
275 x 275 x 150 mm	38800/-	92000/-
405 x 300 x 150 mm	48900/-	106300/-

Stainless steel shaking racks

To hold	No.	Capacity	Flask Type	Price
To hold	16 Nos.	25 ML	Conical Flask	2000/-
To hold	12 Nos.	50 ML	Conical Flask	2000/-
To hold	9 Nos.	100 ML	Conical Flask	2000/-
To hold	5 Nos.	250 ML	Conical Flask	2000/-
To hold	4 Nos.	500 ML	Conical Flask	2000/-
To hold	2 Nos.	1000 ML	Conical Flask	2000/-
To hold	25 Nos.	25mm dia test tubes	Conical Flask	2000/-

STAR-23 WATER BATH ORBITAL SHAKER 148000/-

“SPACE TIME” shaker are fabricated out of double walled construction, inner walls are made of stainless steel & the outer walls are made of thick best quality mild steel duly powder coated. To prevent any heat loss the gap between inner & outer walls are filled with thick glass wool insulation. Door is made of thick transparent double walled glass/acrylic with best quality hinges handle etc. Temp. can be maintained from the range of from 5 to 90 deg C with accuracy of +-1.0 deg C and is digitally controlled by digital temperature indicator cum controller with PT-100 sensor. This controller is fitted with time delay relay to control the accuracy in maintaining the temperature. Cooling is done with ISI mark compressor of EMERSON or any other standard make which is connected to thick copper coils placed in the rear of the chamber through condenser, fan motor, capacitor, relay etc. whole cooling unit is placed below the main chamber in a G.I. housing, Heating is done with ISI mark strip type heaters placed near the cooling coils. Air is circulated by ISI mark silicon binded motor which is connected to balanced blower. Whole unit is mounted on castor wheels. Tray size is 400x400 mm. The control panel is fitted with on/off switch, indicators, digital controllers, tachometer etc. Shaking is done with 1/4 H.P. motor (brushless induction) with shaking speed of 20-250 rpm, controlled by step less electronic frequency controller with digital tachometer i.e. speed is controlled by digital speed indicator cum controller. The shaker is fitted with universal S. Steel platform to



STAR-23

CAT. NO.	DESCRIPTION OF ITEM	PRICES (PER UNIT) IN RUPEES
----------	---------------------	-----------------------------

accommodate clamps of different sizes, Fitted with DC motor. Provided with Orbital / Gyrotory shaking motion, with shaking deviation of +1% of the speed, Power 230 V, 5A single

Same as above but with only heating system, temp. ambient to 90 degC 88000/-

STAR-24 HIGH PRECISION THERMOSTATIC WATER BATH

Double walled chamber has inner made up of thick S.S. and outer wall is thick M.S. duly powder coated. A glass window is provided on the front side for an easy inside view. A high speed stirrer with a motor of 1/20 H.P. is fitted to the unit for continuous stirring and thus maintaining a uniform temperature throughout. A Speed regulator is provided on the front panel to control speed of the stirrer. The heating mechanism comprises of set of heaters a sensitivity of +0.5 deg C +1 digit, from ambient of 100 deg C. To work on 220/230 volts A.C. supply.

Chamber Size	Price
300x250x225 mm	31000/-
430x240x265 mm	38000/-
625x250x225 mm	51000/-

OPTIONAL ACCESSORIES

Digital temperature indicator-cum-controller 6000/-

STAR-25 OVEN UNIVERSAL (ELEMENTS ON THREE SIDES)

Double walled, inner walls made of thick stainless steel / Aluminum, outer walls made of heavy duty Mild Steel duly powder coated in blue / off white color for longer durability of equipment. To prevent any heat loss insulation between inner and outer wall is done with 75mm thick best quality glass wool. Door is made of double walled with inner part made of thick stainless steel and outer part is made of Mild Steel duly powder coated painted. Door is provided with best quality handle, gasket etc. Inner chamber is provided with 2/3 nos. perforated stainless steel trays. Temp. range is from ambient to 250 degree C and is controlled by thermostat. Heating is done with ISI mark heating elements made from ni-chrome heating wire placed in porcelain cups in bottom as well as in sides to maintain the uniformity to the temp. Air circulating fan is provided to maintain the uniformity of the temp. through out the chamber.

Size Inside Chamber (W x D x H)	Tray	Aluminum	S.S. Chamber Temp. Up to 250 deg C	S.S. Chamber Temp. Up to 300 Deg C
300 x 300 x 300 mm (12"x12"x12")	02	9400/-	11900/-	18500/-
350 x 350 x 350 mm (14"x14"x14")	02	11000/-	13900/-	21320/-
450 x 450 x 450 mm (18"x18"x18")	02	15600/-	22900/-	28900/-
450 x 450 x 600 mm (18"x18"x24")	02	22550/-	28400/-	36900/-
600 x 600 x 600 mm (24"x24"x24")	02	29600/-	34760/-	42600/-
600 x 450 x 910 mm (24"x18"x36")	03	29250/-	36800/-	44900/-
600 x 600 x 910 mm (24"x24"x36")	03	36450/-	45800/-	51800/-

OPTIONAL ACCESSORIES:

- 1. Digital temperature indicator cum controller with PT-100 sensor 6000/-
- 2. Digital Timer for above 4000/-

STAR-26 INDUSTRIAL OVEN (TEMP UPTO 250 DEGREE C)

Double walled, Inner chamber made of heavy duty G.I. Sheet properly painted with temperature resistant aluminum paint and outer walls made of mild steel sheet painted with hammer tone paint To prevent any heat loss insulation is done between the inner & outer walls with high grade glass wool Temp. Range is from 50 deg C to 250 deg C which can be thermostatically controlled with sensitivity of +1 deg C. Heavy duty angle frame to support the load of the trays. The trays are made of aluminum. Heating is done by strip type heaters. Ventilator is provided on the top to exhaust the moisture. Forced air is circulated through V-Belt driven motor. Control panel is fitted with indicator thermostat and on/off switch. Works on 220/230 volts AC.



STAR-24



STAR-25



STAR-26

CAT. NO.	DESCRIPTION OF ITEM	PRICES (PER UNIT) IN RUPEES
----------	---------------------	--------------------------------

Size (WxDxH)	Load	Price	Trolley
3' x 3' x 3'	5 KW	83500/-	8600/-
3' x 3' x 4'	6 KW	116500/-	9800/-
3' x 3' x 5'	8 KW	168000/-	13400/-
3' x 3' x 6'	10 KW	182000/-	17000/-
3' x 3' x 7'	12 KW	222000/-	19400/-
3' x 3' x 8'	15 KW	248000/-	21800/-

STAR-27 TRAY DRYING OVEN / TRAY DRYER

Sturdy double walled construction, Inner wall is made out of thick G.I./PCRC sheet duly painted with high temperature aluminum paint & the outer walls are made of heavy duty PCRC duly primer coated and powder coated / enamel painted. The gap between inner and outer wall is filled with 75mm thick glass wool insulation to prevent any heat loss. The door is also made of double walled, properly insulated. & provided with best quality handle, gasket etc. The Oven is equipped with brackets to support the heavily laden trays at different heights. Temp. is maintained from ambient to 250 deg C with an accuracy of +/- 3 deg C and is controlled by digital temperature indicator cum controller with PT-100 sensor. Heating is done with ISI mark heating elements made from ni-chrome heating wire placed in the sides of the chamber. The whole unit is mounted on sturdy angle iron frame. To maintain the temperature uniformity through out the chamber the V belt driven motor is fitted to operate the blower system in the side the chamber. Works on 220V 50Hz single phase AC.



STAR-27

TRAY CAP.	LOAD	G.I. Chamber & Aluminum Tray
8 Trays	5 KW	85500/-
12 Trays	8 KW	96500/-
24 Trays	10 KW	188500/-
48 Trays	12 KW	296500/-
96 Trays	22 KW	474000/-

OPTIONAL ACCESSORIES:

Mechanical Timer 0-24 hrs.	3000/-
----------------------------	--------

STAR-28 INCUBATOR BACTERIOLOGICAL (THREE SIDE ELEMENTS)

Double walled, inner chamber made of Stainless Steel 304 grade and outer body made of MS with epoxy finish, The inner and outer wall are provided with thick glass wool insulation to prevent any heat loss. The door is made of double glass window, heavy hinge. Inner chamber is provided with three no's of stainless steel trays provided with ribs to adjust the shelves at various height. A motorized blower is fitted for perfect air circulation inside the chamber. Air ventilators are provided on upper part of the sides. The circulating fan will be fitted in the ducts. Temp. range is from 5 degree C above ambient to 70 degree C and is controlled by thermostat. Heating Element is made of high-grade wire covered with suitable material and fitted at the bottom and on sides. Complete with cord & plug. Work on 220/230 V.A.C.



STAR-28

Size Inside Chamber (W x D x H)	Tray	Aluminum	S.S. Chamber
300 x 300 x 300 mm (12"x12"x12")	02	9400/-	13300/-
350 x 350 x 350 mm (14"x14"x14")	02	11000/-	15300/-
450 x 450 x 450 mm (18"x18"x18")	02	15600/-	24600/-
450 x 450 x 600 mm (18"x18"x24")	02	22550/-	31300/-
600 x 600 x 600 mm (24"x24"x24")	02	27600/-	36760/-
600 x 450 x 910 mm (24"x18"x36")	03	29250/-	38800/-
600 x 600 x 910 mm (24"x24"x36")	03	36450/-	48300/-

OPTIONAL ACCESSORIES:

1. Digital temperature indicator cum controller with PT-100 sensor with an accuracy of +/- 1 deg C	6000/-
2. Digital Timer for above	4000/-

CAT. NO.	DESCRIPTION OF ITEM	PRICES (PER UNIT) IN RUPEES
----------	---------------------	-----------------------------

STAR-29 VACUUM OVEN

These are double walled with outer made of M.S. sheet duly enamel painted and inner made up of heavy gauge S.S. sheet. Gap between the two walls is duly filled with high grade glass wool to avoid thermal loss. Temperature range from 50 deg C to 150 deg C is controlled by digital temp indicator cum controller and accuracy of +/- 1 deg C. It is capable of withstanding a high vacuum. Provided with vacuum gauge, see through transparent window of toughened glass and one shelf. To work on 220/230 volts A.C. supply. But without Vacuum pump.

Size (mm)	Inches	S.S. Price
250 x 250	10 x 10	39500/-
250 x 300	10 x 12	42000/-
300 x 300	12 x 12	47000/-
300 x 375	12 x 15	52500/-

OPTIONAL ACCESSORIES:

Vacuum Pump for above 21500/-

STAR-30 HYBRIDIZATION OVEN / INCUBATOR 98500/-

These double walled units have outer chamber of M.S. sheet duly powder coated and inner of S.S. Temperature range from 5 deg C above ambient to 90 deg C is controlled through a PID controller with an accuracy of +/- 0.5 deg C. An air circulation fan is also provided to ensure temperature uniformity. A carrier on hold bottles (6 in number of size 60 mm dia x 200 mm depth) can be easily placed on the rotor. The carrier rotates at a variable speed of 5 to 20 r.p.m. Viewing glass window in the door allows inspection of the specimen inside the chamber. To work on 220/230 volts A.C.

ACCESSORIES

(A) Additional carrier to hold bottles 5000/-
 (B) Hybridization bottle to cost extra 3000/-

STAR-31 OVEN & INCUBATOR COMBINED

Double walled, inner shell made of thick stainless steel & outer wall made of heavy duty M. Steel duly powder coated for longer durability. Insulation between inner and outer wall is done with 75mm thick glass wool to prevent any heat loss. Door is provided with best quality handle, gasket etc. Inner chamber is provided with 2/3 nos. shelf of perforated stainless steel. Temp. range is from 5 degree C above ambient to 250 deg C in oven and from 5 degree C above ambient to 70 deg C in incubator and is controlled by digital temperature indicator cum controller with PT-100 sensor with an accuracy of +/- 1 deg C. Heating is done with ISI mark heating elements made from ni-chrome heating wire placed in porcelain cups in bottom as well as in sides to maintain the uniformity of the temp. Air circulating fan is fitted to maintain the uniformity of the temp. through out the chamber. Separate control for each chamber and the control panel provided on the top.

SIZE INSIDE CHAMBER (WIDTH X DEPTH X HEIGHT)	S. STEEL
355 x 355 x 355 mm	44000/-
455 x 455 x 455 mm	57000/-
455 x 455 x 605 mm	72000/-
605 x 605 x 605 mm	88000/-

STAR-32 MUFFLE FURNACE RECTANGULAR

Useful for hardening, annealing, reheating etc., Outer made of double walled thick PCRC Sheet duly powder coated painted insulation with high temperature ceramic fiber wool. Heating elements made of Kanthal wire in coil form wrapped on the muffle, embedded in high grade refractory cement and backed by HIGH DENSITY CERAMIC FIBRE BLANKET, which avoids loss of heat. The Temperature is controlled by digital temperature indicator cum controller. For the models of Maximum temperature of 1000 degree C, the working temperature is 900 degree C and for higher temperature models, the maximum temperature is 1200 degree C and the working temperature is 1100 degree C.



STAR-29



STAR-30



STAR-31



STAR-32



Great Innovations to Protect

CAT. NO.	DESCRIPTION OF ITEM	PRICES (PER UNIT) IN RUPEES
----------	---------------------	--------------------------------

Muffle Size (WxHxD)	Working 900 deg C	Working 1100 deg C
100x100x225 mm	21000/-	30500/-
125x125x250 mm	24000/-	41000/-
150x150x300 mm	32000/-	45500/-
200x200x300 mm	37000/-	68000/-
275x275x375 mm	45700/-	76500/-

STAR-33 B.O.D. INCUBATOR

“SPACE TIME” BOD incubator are made of Double walled construction, inner shells are made of stainless steel 304 quality & the outer walls are made of thick best quality mild steel duly powder coated with gray / off white color. The surface of outer wall is primer coated for anti rusting. The gaps between inner & outer walls are filled with thick 75mm glass wool Insulation to prevent any heat loss. The equipment is fitted with double door. The inner door is made of thick transparent glass for the easy full view of the inner chamber and outer door is double walled, properly insulated with glass wool and also provided with best quality handle, gasket, lock etc. The door is fitted with door operated illumination lamp. Inner chamber is provided with 2/3 nos. perforated stainless steel shelves with ribs to adjust the shelves at desirable height. Whole unit is mounted on castor wheels.

Temp. Range is from 5 degree C to 60 degree C with accuracy of +/-0.5 degree C and is electronically controlled by Digital temperature Indicator cum controller with PT-100 sensor. This controller is provided with time delay relay to control the accuracy in maintaining the temperature.

Cooling is done with ISI Mark compressor of EMERSON or any other standard make which is connected to thick copper coils placed in the rear of the chamber through condenser, fan motor, capacitor, relay etc. whole cooling unit is placed below the main chamber in a GI housing. CFC free, Environment friendly. Heating is done with ISI mark strip type heaters placed near the cooling coils. Air is circulated by 1/2 nos. ISI mark Silicon binded motors, which are connected to balanced blowers, & operates for heating and cooling. The control panel is fitted with on/off switch, Indicators, Digital Controllers etc.



STAR-33

Size Inside Chamber (Height x Width x Depth)		S. Steel
610 x 455 x 410 mm	4 cu.ft.	76500/-
830 x 505 x 515 mm	6.1 cu.ft.	83000/-
850 x 500 x 500 mm	8 cu. ft.	85500/-
875 x 570 x 550 mm	10 cu.ft.	88000/-
900 x 650 x 580 mm	12 cu.ft.	96000/-
900 x 700 x 650 mm	15 cu.ft.	116500/-
1000 x 750 x 750 mm	20 cu. ft.	214000/-

OPTIONAL ACCESSORIES:

- | | |
|---|----------|
| 1. BOD Incubator with interior illumination with 3 number fluorescent tube of 60 mm length placed vertically along the back wall. Minimum temperature can be obtained from 10 deg C to 50 deg C when all the tubes are on at the extra. | 3300/- |
| 2. BOD Incubator incorporated with timer 0-24 hours for regulating cyclic illumination condition at extra cost. | 3300/- |
| 3. BOD Incubator incorporated with timer 0-24 hours for regulating cyclic illumination condition at extra cost with Battery Backup | 4500/- |
| 4. Exterior lighting with 2 tubes lights on each side | 7600/- |
| 5. Humidity control from ambient to 90% by Humidistat at extra cost | 14500/- |
| 6. Digital humidity indicator cum controller | 10500/- |
| 7. Shaking machine can be fitted inside the BOD with variable speed with the help of regulator | 24000/- |
| 8. Voltage Stabilizer 2 KVA at extra cost | 5300/- |
| 9. Micro Processor based P.I.D. controller instead of Electronic digital temperature indicator cum controller for better accuracy | 10000/- |
| 10. BOD incubator for incubation in CO ₂ / Air mixture can be provided with an inlet nozzle on the side of control panel providing a means of admitting of CO ₂ / Air CO ₂ mixture | 9000/- |
| 11. Digital Indicator for CO ₂ incubation with % (Percentage) setting | 148500/- |
| 12. Data logger, 8 Channel, 1000 points memory | 67500/- |
| 13. Data logger, 8 Channel, 1000 points memory with hi-low alarm & Printer interface | 113500/- |

CAT. NO.	DESCRIPTION OF ITEM	PRICES (PER UNIT) IN RUPEES
----------	---------------------	-----------------------------

14.	Profile controller for setting of 30 Programs	22000/-
15.	Profile controller for setting of 30 programs with computer attachment	77500/-
16.	PLC Based Temperature Controller with touch screen display of time, date, Temperature, Facility of attachment of pen drive	92000/-

STAR-34 BACTERIOLOGICAL ORBITAL SHAKING INCUBATOR 92500/-

Double walled. Inner body made of thick stainless steel sheet 304 quality & outer body made of Mild Steel duly powder coated painted. The insulation between inner & outer walls are done with glass wool to prevent any heat loss. Top lid is made of transparent (see through) plexi glass for easy view of inside chamber. Variable speed rotary shaker platform is fitted with imported DC driven motor for continuous operation. Shaking platform can accommodate 16 flask of 250 / 500ml or 25 flask or 100ml or 36 flask of 50ml provided at the base of incubator. Variable speed motor is fitted outside of the inner chamber at the base. Complete unit is mounted on a sturdy angle iron frame. Temperature range from ambient to 70 deg C is controlled by digital temperature indicator cum controller with an accuracy of 0.5 deg C. An air circulation fan is fitted for temperature uniformity. The control panel is fitted with digital RPM/speed indicator, Digital Temperature Indicator, main lamps etc Work on 220/230 V AC supply.



STAR-34

OPTIONAL ACCESSORIES:

Spare set of lotus clamps.	4500/-
----------------------------	--------

STAR-35 ORBITAL INCUBATOR SHAKER (BOD CUM SHAKER)

Double walled construction with inner chamber made of thick 304 grade stainless steel & outer walls are made of thick best quality mild steel duly powder coated / painted for longer durability of equipment. The gap between inner & outer wall is filled with glass wool insulation to prevent any heat loss. Door is made of thick transparent double walled glass with best quality hinges handle etc. Temp. can be maintained from the range of 5 deg C to 60 deg C with accuracy of +/- 0.5 deg C and is controlled by digital temperature indicator cum controller with PT-100 sensor. The digital temperature controller is fitted with time delay relay to control the accuracy in maintaining the temp. Cooling is done with ISI mark compressor of EMERSON or any other standard make which is connected to thick copper coils through condenser, fan, motor, capacitor, relay etc. Whole cooling unit is placed below the main chamber in a G.I. Housing. The whole unit is mounted on castor wheels. Heating is done with ISI mark strip type heaters placed near the cooling coils. Air is circulated by ISI mark silicon winded motors, which are connected to balanced blowers, which operates continuously for heating and cooling.

Provided with 1 no. light and regulated by automatic 0-24 hours timer. Provided with on/off switch, indicators, digital controllers, shaking is done with 0.25 H.P. motor (brush less induction) step less electronic frequency control with shaking speed of 20-250 rpm, controlled by digital speed indicator. Orbital / Gyrotory Shaking Motion, Diameter of orbital motion 25mm, digital indicator. DC Motor, Power 230 V, 5A. single phase. Provided with universal S. Steel platform to accommodate clamps of different size of flask



STAR-35

A) Tray size 600X600 mm to accommodate 25 flask of 250 ml	192500/-
B) Tray size 400X400 mm to accommodate 16 flask of 250 ml	168500/-
C) Tray size 300X300 mm to accommodate 09 flask of 250 ml	137500/-

STAR-36 Same as above but with temperature range is from ambient to 70 deg C i.e. with heating arrangement only. **128000/-**

STAR-37 WALK-IN-INCUBATOR

Pre fabricated PUFF insulated panels with interior & exterior made from thick pre-painted steel sheet. Insulation is done with 60mm thick PUFF. Panels are joint together by means to tongue and groove and locked together on each side to ensure air tightness and leakage. Flooring is done with antiskid Aluminum. Door size of 6'x3' hinged type with proper lock & key and sweeping gasket Room temperature 2 to 10 deg C (or from 2 to 40 deg C if required)

Complete with ISI mark HERMATIC sealed compressor or EMERSON or any other make with wall mounted type evaporator, and condensing unit is also in sleek design, pressed sheet metal



STAR-37

CAT. NO.	DESCRIPTION OF ITEM	PRICES (PER UNIT) IN RUPEES
----------	---------------------	-----------------------------

component, inner grooved copper tubes, slit aluminum fins, permanently lubricated fan and motor with CFC free eco-friendly refrigerant. Compressor is very efficient and power saving. Operating voltage 430 V / 50 Hz. 3 phase. High insulation K value and superior characteristics as regards thermal coefficients and insulation. No messy civil work, thereby reducing installation times. Fire retardant and covered with pre painted sheets, thereby eliminating any fungal growth. Self standing and supporting. The interior and exterior metals surfaces match the finish of adjacent panels and contain foamed in place. Vapor protected light fixtures mounted on door frame. Switch and pilot light positioned adjacent to the door and built in. Sweep gasket ensures air tightness and seal along the bottom of the door.

AVAILABLE IN FOLLOWING SIZE (Width x Height x Depth)

6' x 6' x 6' ft	447000/-
10' x 10' x 10' ft	651000/-

--do--same as above but with controlled humidity up to 90% +-5%, Temp range from 5 deg C to 40 deg C

6' x 6' x 6' ft	497900/-
10' x 10' x 10' ft	711000/-

STAR-38 HUMIDITY CABINET (ENVIRONMENTAL CHAMBER)

All purpose Humidity Cabinet Conforming to Stricter specifications, specifically designed for drying environment of plant and animal growth, investigation of vapour, proof ness of packed materials, determination of di-electric strength, insulation tests of electrical components and many other tests requiring an atmosphere of controlled temp. and humidity. Double walled, inner walls made of thick stainless steel & outer walls are made of thick best quality mild steel duly powder coated with off white / gray in color, To prevent any heat loss gap between inner and outer wall are filled with 75mm thick glass wool insulation. Provided with double door, The inner door is made of thick transparent glass for the full view of inner chamber and outer door is double walled properly insulated with glass wool and fitted with best quality handle, gasket etc. Inner chamber is provided with 3 nos. perforated stainless steel shelves with ribs to adjust the shelves at desirable height whole unit is mounted on castor wheels.

Temperature can be maintained from the range of 5 deg C above ambient to 60 deg C with an accuracy of +/- 0.5 deg C and is controlled by digital temperature indicator cum controller with PT-100 sensor. This controller is provided with time delay to control the accuracy in maintaining the temperature. Heating is done with ISI mark strip type heaters placed around the inner chamber Air is circulated by ISI mark silicon winded motors which are connected to balanced blowers. Humidity will be maintained from 55% to 95% with an accuracy of +/-5% and humidity is generated by imported mist generator and is controlled with the help of imported humidistat and is indicated by round hygrometer. Humidity is generated through a water reservoir placed in the lower/side prtion of the chamber. Provided with on/off switch, indicators, digital controllers etc.



STAR-38

SIZE (WXDXH) INSIDE CHAMBER	Ltrs.	S. STEEL
455 x 455 x 710 mm	147	68500/-
605 x 605 x 605 mm	224	78000/-
605 x 605 x 910 mm	336	102000/-

----do----same as above chamber with temperature range 5 deg to 60 deg C with in accuracy of +/-0.5 deg C i.e. with cooling & heating system & humidity 55% to 95% +-5%

SIZE (WXDXH) INSIDE CHAMBER	S. STEEL
455 x 455 x 710 mm	94000/-
605 x 605 x 605 mm	98000/-
605 x 605 x 910 mm	126000/-

OPTIONAL

1. Electronic digital indicator cum humidity controller	9900/-
2. PID controller at extra cost	9500/-

CAT. NO.	DESCRIPTION OF ITEM	PRICES (PER UNIT) IN RUPEES
----------	---------------------	--------------------------------

STAR-39 PLANT GROWTH CHAMBER

Double walled construction, inner chamber made of thick stainless steel & outer walls are made of thick best quality mild steel duly powder coated / enamel painted for longer durability, To prevent any heat loss gap between inner and outer walls are filled with 75mm thick glass wool insulation. Provided with double door, Inner Chamber is fitted with full view glass door for inspection of material in side the chamber. The outer door made of Mild Steel properly insulated & powder coated is fitted with best quality handle gasket lock etc. Inner chamber is provided with 3 nos. perforated stainless steel shelves with ribs to adjust the shelves at desirable height. Whole unit is mounted on castor wheels for easy mobility. The outer door is provided with door operated illumination lamp. Temp. range is from 5 deg C to 60 deg C and temp. can be obtained from 15 to 50 deg C +/-1deg C when all lights from two sides and top are switch 'ON'. Temperature is controlled by DUAL electronic digital temp. indicator cum controller to set two temperature one for day and second for night with PT-100 sensor. This controller is provided with time delay relay to control the accuracy in maintaining the temp. Temp. is maintained with an accuracy of +/-0.5 deg C Equipment is fitted with automatic 0-24 hours timer with battery backup Exterior illumination is done with the help of fluorescent tubes 60 cm. Long of 20wt. Each placed vertically in the side wall Cooling is done with ISI mark compressor of EMERSON or any other standard make CFC free, environment friendly which is connected to thick copper coils placed in the rear of the chamber through condenser, fan motor, capacitor, relay etc. Whole cooling unit is placed the main chamber in a GI housing. Heating is done with ISI mark strip type heaters placed near the cooling coils. Air is circulated by 2-nos. ISI mark silicon binded motors, which are connected to balanced blowers, which operates continuously for heating and cooling. Humidity is maintained from ambient to 90% with the help of natural mist evaporator and is controlled by digital humidity controller with an accuracy of + 5% RH. Control panel is fitted with on/off switch, indicators, digital controllers etc.



STAR-39

WIDTH X HEIGHT X DEPTH	SIZE	CAPACITY	PRICE
570 x 875 x 550 mm	10 cu.ft.	280 Ltr.	142000/-
775 x 900 x 775 mm	20 cu.ft.	560 Ltr.	224000/-
825 x 1200 x 825 mm	30 cu.ft.	840 Ltr.	298000/-
900 x 1820 x 800 mm	45 cu.ft.	1282 Ltr.	454500/-

DEEP FREEZERS

STAR-40 DEEP FREEZER -20 DEG C (VERTICAL TYPE)

Thermostatically controlled, Provided with combination of fixed or pull out drawers, No Dust, low noise level. Puff insulated, CFC free heavy duty compressor, provided with shelves. Fast freeze button and lamp. Mains warning lamp. Temperature -20 deg C. (Approx capacity as given under)

(a) Capacity 308 ltr, solid door	85000/-
(b) Capacity 400 ltr but with glass door	147000/-
(c) Capacity 990 ltr but with glass door	218000/-
(d) Capacity 148 ltr, solid door	47000/-



STAR-40 (a)

STAR-41 DEEP FREEZER -40 DEG C (VERTICAL/HORIZONTAL TYPE)

Built in condenser, low energy consumption, Single door, CFC free compressor, Temperature Range up to -40 deg C

Capacity in ltrs:	100	170	270	325
Price:	278000/-	292000/-	298000/-	347000/-

STAR-42 DEEP FREEZER (GLASS DOOR, VERTICAL TYPE)

Single glass door. Multi positional shelving system, Unique Top to Bottom view with minimal wastage of storage space, No Dust, low noise level. Puff insulated, CFC free heavy duty compressor.

Gross Capacity(Approx):	110	320	380	990
Temperature Range:	0 deg to 10 deg C			
PRICE:	38000/-	54000/-	115000/-	192000/-

STAR-43 HORIZONTAL DEEP FREEZER TEMPERATURE UPTO: -20 DEG C

Double walled, exterior made of painted PCRC, Puff insulated, top lid, light in weight with best quality



STAR-40 (d)

CAT. NO.	DESCRIPTION OF ITEM	PRICES (PER UNIT) IN RUPEES
----------	---------------------	--------------------------------

hinges. Provided with basket etc. solid state thermostatic controlled, temp. upto -20 deg C. Built in condenser, childproof temp. control knob. Lockable lid with castor wheels.

Cap. (Approx.)	100 ltr.	170 ltr	280 ltr	390 ltr.	465 ltr	720 ltr.
Temperature Range	(-20 deg C ~ +8 deg C)					
PRICE:	28500/-	31500/-	38900/-	48500/-	58800/	85800/-

STAR-44 ULTRA FREEZER -80°C VERTICAL / HORIZONTAL MODEL

Volume Liter:	100 ltr	170 ltr	270	325	380	500
Compartments:	2 Nos.	4 Nos.	4 Nos.	4 Nos.	4 Nos.	5 Nos.
Price of Basic Unit: (w/o cooling)	288000/-	293000/-	295000/-	297000/-	298000/-	298000/-
Cooling Unit:	258000/-	261000/-	272000/-	282000/-	297000/-	323000/-

STAR-45 ICE FLAKING MACHINE

Stainless steel body and reentering door which assures an easier accessibility to ice, and it is provided with electro mechanical control device. Stainless steel cabinet, properly insulated. Interior & exterior made of S.S., CFC free refrigerant. Ice production is calculated at ambient temperature 10 deg C and water temp. 10 deg C, Automatic control, Air Cooled Model.

Ice output per 24 hours/kg.	50	70	90	150
Storage bin kg	10	15	19	38
Rated Capacity kg	60	70	90	150
PRICE:	188000/-	225000/-	233000/-	282000/-

STAR-46 LAMINAR AIR FLOW BENCH (HORIZONTAL)

It involves double filtration of air. Atmospheric air is drawn through prefilters and is made to pass through the work table at desired velocity of 1000 cfm +/-20.

Laminar flow is made out of 18mm thick Duro Board / MS / SS Body with exterior covered with thick white mica sheet/ MS/SS & interior covered with epoxy paint. All joints are tongs and grooved type for extra sturdiness. Table top is covered with non antiglare platform of stainless steel sheet. The side panels are fixed and are made of clear 0.25 inches thick glass acrylic sheet. Front side is fitted with acrylic door. Environmental air is drawn by a balanced double blower through prefilters retaining more than 75% of particles and biological contaminants larger than 0.3 microns

PRE filters are fabricated out of washable synthetic non woven media. The material is moisture fungus bacteria and frost resistant and is mounted in metallic frame. The filters are DOP as per BS: 2831 and are 90% efficient to 5 microns.

These are made out of micro frame fiber with corrugated aluminum foil separators and mounted in anodized aluminum frame sealed with epoxy sealant and is provided with rubber gasket for proper sealing. HEPA filters are 99.97% efficient down to 0.3 microns and are protected by expanded metal sheet or plastic sheet. HEPA filters are DOP tested from point to point with IPD less than 18mm WG and FPD less than 40mm WG at rated flow upto 1000 cfm +/-20 and confirming to class 100 of revised US Federal Standard 209B. Blower Assembly consist of suitable American universal motor or equivalent working on 220V 50 Hz with a 15 amp. Power point. Dynamically and statistically balanced blowers with air velocity 0.5 m/s make the unit least vibrant with minimum noise level i.e. less than 65db. Clean air velocity 90 +/-20 FPM at the outlet of HEPA filters. Provided with fluorescent tube lights to provide 800-1000 lux. Static pressure manometer accurately calibrated to assess static pressure in HEPA filters. Provided with gas line fitting to connect the instrument with gas or air. Provided with UV light of 30W 254nm. Control panels are provided with mains indicator lamp fluorescent and UV tube switch.

Working Area	No. of HEPA	Wooden Body SSTop	With MS Body S.S. Top	With SS Body S.S. Top
2x2x2	1	51000/-	68000/-	96000/-
3x2x2	1	63000/-	78000/-	108000/-
4x2x2	2	76000/-	91000/-	126000/-
6x2x2	2	94000/-	122000/-	183000/-
8x2x2	3	124000/-	155000/-	224000/-



STAR-42



STAR-45



STAR-46

CAT. NO.	DESCRIPTION OF ITEM	PRICES (PER UNIT) IN RUPEES
----------	---------------------	--------------------------------

STAR-47 LAMINAR FLOW (VERTICAL)

---do---same as above but Vertical Type

Working Area	No. of HEPA	Wooden Body SS Top	With MS Body S.S. Top	With SS Body S.S. Top
2x2x2	1	56000/-	75000/-	98000/-
3x2x2	1	65000/-	85000/-	116000/-
4x2x2	2	77000/-	94000/-	135000/-
6x2x2	2	98000/-	134000/-	198000/-
8x2x2	3	127000/-	173000/-	233000/-

OPTIONAL ACCESSORIES FOR HORIZONTAL & VERTICAL MODELS:

1) U.V. Light	1700/-
2) Magnahelic gauge	16000/-
3) Timer for U.V. Lights	3200/-
4) Caster Wheels	1700/-
5) Particle Dust Count-Validation at site	13500/-
6) Exhaust System with motor & blower	11200/-
7) Exhaust Ducting 5" dia pipe per running feet	900/-
8) UV resistant poly carbonate sheet in place of acrylic sheet	
2'x2'x2' OR 3'x2'x2'	11000/-
4'x2'x2' OR 6'x2'x2'	17500/-
9. LCD Display with soft touch switches for motor, UV light, F.V. Light & U.V. Timer	32000/-
10. Microprocessor based touch screen display system with Display of velocity with lower and upper safe limits. Display of total run time of instrument & timer for U.V. Lamp. Control of U.V. Light to prevent the operator from U.V. Rays as and when required. Door sensors to switch off the UV light when door is opened. Display of message for HEPA filter, U.V. Light etc.	96000/-
11. PC Interface with Rs232 for data transfer to PC	42000/-



STAR-47

STAR-48 FUME HOOD CHAMBER

Fume exhaust hoods are designed to contain and exhaust toxic, obnoxious or otherwise harmful gases, vapors, mist etc to protect personnel and equipment. A motor driven blower creates negative pressure within the chamber extracting the contaminated air from work area and expel it into the atmosphere. The hood is ventilated of the air drawn for inside the laboratory which is used effectively for thorough sweep – out of work chamber.

Fume hood is fabricated out of 18mm thick duro board with interior covered with epoxy paint and all exterior are covered with thick white mica sheet. All joints are tongs and grooved type for extra sturdiness. Table top is covered with non antiglare platform of 304 stainless steel sheet. Inner side panels are covered with chemical resistant ceramic tiles up to 2 ft. height on 3 sides. A up and down sliding sash / door made of thick seasoned teak wood / anodized aluminum and mounted with heavy glass with front opening. Work table base is provided with one drawer and one storage box.

Electric point 15 / 5 Amps 2 nos. Wash basin of size: 250 x 250 x 125mm depth made of S.S. with waste pipe. Stainless steel water tap. Assembly consist of suitable American universal motor or equivalent working on 220V 50Hz single phase AC. Dynamically and statistically balanced blowers make the unit least vibrant with minimum noise level. Provided with ½ nos. fluorescent tube light with all necessary fittings etc. provided with 2 nos. extra electrical points. Exhaust system is provided with ISI mark exhaust fan 15" motor driven and fitted with suitable exhaust pipe and ducting. Provided with mains indicator lamp, fluorescent tube, switch etc.

Working Chamber Sizes (W x D x H) Wooden Body

4' x 2' x 2'	3' x 2' x 2'	6' x 2' x 2'	8' x 2' x 2'
96000/-	82000/-	132000/-	150000/-

--do--same as above but MS Duly Powder Coated Body

Working Chamber Sizes (W x D x H)

4' x 2' x 2'	3' x 2' x 2'	6' x 2' x 2'	8' x 2' x 2'
112000/-	93500/-	174000/-	214000/-



STAR-48

CAT. NO.	DESCRIPTION OF ITEM	PRICES (PER UNIT) IN RUPEES
----------	---------------------	--------------------------------

---Do---same as above but Stainless Steel (304) Grade Body

4' x 2' x 2'	3' x 2' x 2'	6' x 2' x 2'	8' x 2' x 2'
162000/-	122000/-	248000/-	324000/-

OPTIONAL ACCESSORIES:

Exhaust System with motor & blower	10000/-
Fume duct made of PVC 5" dia can be provided along with hood at an extra cost of (per running feet)	800/-
Erections charges	6500/-

STAR-49 BIOLOGICAL SAFETY CABINET: (AS PER CLASS II)

USED IN TISSUE CULTURE, MICROBIOLOGY, BIOCHEMISTRY LABS, DNA/RNA RESEARCH, VIROLOGY & PATHOLOGY LABS, CHEMICAL WORK & BIOLOGICAL WORK INVOLVING VIRUSES AND PATHOGENS

Provides the protection of operator from risk of biological agent. It provides a sterile work environment. It creates the negative pressure in the work chamber with partial re circulated air, which is exhausted through a HEPA filter. Approx. 70% of the air is re circulated back into the work area and 30% of the air is filtered through HEPA and is exhausted to the environment through ducting without mixing with the re circulated air. It prevents inside air from going out and room air from entering in. Stainless steel table with perforation in complete work table or in sides. Exhaust ducting to carry the air outside. Complete with prefilters HEPA, U.V. Germicidal light, manometer, gas cock, front sliding door & construction same as in vertical laminar flow bench.

WORKING AREA:

Working	Wooden Body	With MS Body	With SS Body
Area	SS Top	S.S. Top	S.S. Top
2x2x2	86000/-	98000/-	126000/-
3x2x2	91000/-	106000/-	144000/-
4x2x2	98000/-	143000/-	186000/-
6x2x2	136000/-	163000/-	238000/-

--do--same as above but (AS PER CLASS III)

same as above but its exhaust systems ensure 100% exhaust of air from the work area via suitable plenum under the S.S. perforated table, and it works in tandem with the main air flow system. The built in HEPA filter, burn out system (Optional) and an additional U.V. germicidal light at exhaust ensures environment protection.

WORKING AREA:

Working	Wooden Body	With MS Body
Area	SS Top	S.S. Top
2x2x2	198000/-	188000/-
4x2x2	214000/-	234000/-
6x2x2	232000/-	296000/-

SPARE ACCESSORIES CAN BE FITTED AT AN EXTRA COST

1. Special Exhaust System	10000/-
2. Exhaust ducting per R/feet	900/-
3. Burn Out unit	14000/-

STAR-50 PRESSURE MODULE

Pressure module generate positive pressure in a closed room. These are designed to provide a clean area within a small enclosure. These are source of fresh air in the room. Body is mode of wood, mild steel duly powder coated or stainless steel HEPA filters are made out of micro glass fibre with corrugated aluminum foil separators and mounted in anodized aluminium frame sealed with epoxy sealant and is provided with rubber gasket for proper sealing. Heap filters are 99.97% efficient down to 0.3 microns and are protected by expanded metal sheet or plastic sheet. Heap filters are DOP tested from point to point with IPD less than 18mm WG and FPD less than 40mm WG at rated flow upto 1000 cfm +/- 20 and confirming to class 100 of revised US federal Standard 209B.

Blower assembly consist of suitable American universal motor or equivalent working on 220V 50 Hz



STAR-49



STAR-50

CAT. NO.	DESCRIPTION OF ITEM	PRICES (PER UNIT) IN RUPEES
----------	---------------------	--------------------------------

with a 15 amp. Power point. Dynamically and statistically balanced blowers with air velocity 0.5 m/s make the unit least vibrant with minimum noise level i.e. less than 65db. Clean air velocity 90 +/- 20 FPM at the outlet of Hepa filters.

Standard Size (Working Area)	2' x 2'	3' x 2'	4' x 2'
Wooden Body	35000/-	38000/-	56000/-
MS Body	38500/-	58000/-	77000/-
SS Body	49000/-	74000/-	98000/-

STAR-51	TISSUE CULTURE HOOD	42000/-
---------	---------------------	---------

Made of sunmica clad thick wooden board and stainless steel working top the unit has frame at front fitted with transparent plexi glass and has an arrangement for keeping the door open if desired. Fitted with one U.V. Germicidal light and 1 florescent light. Provided with S.S. Top.
Out Side Size: 1200 x 600 x 600mm

OPTIONAL

A) EXHAUST SYSTEM AT COST EXTRA	6850/-
---------------------------------	--------

STAR-52	AIR CURTAIN
---------	-------------

An air Curtain is a modern device which, when installed on a door, forms an invisible curtain of continuous air and thus prevents escape of conditioned air and entry of outside hot, humid, dirty and unwanted polluted air. The cabinets of Air Curtain are made of cold rolled Mild Steel sheets. The blowers are made of high quality aluminum sheets, duly balanced both, statically as well as dynamically on computerized digital balancing machines, designed to provide uniform air with minimum noise and no vibration. All units are thoroughly tested at works and meet the highest standards. The motors used are of continuous rating with sealed ball-bearings.

Size Door width	Price
600 mm	11000/-
900 mm	13500/-
1200 mm	16000/-
1500 mm	20000/-
1800 mm	24000/-

OPTIONAL : Door Operated Switch	8500/-
---------------------------------	--------

STAR-53	INNOCULATION CHAMBER
---------	----------------------

Made of sunmica clad thick wooden board and plywood at back. The side windows are provided with thick plexi glass and front side is fitted with slanting glass door. Inside sunmica clad. Lower portion is provided with glove ports and gauntlets on front window. One fluorescent tube and one ultra violet tube are fitted inside the chamber.

Outside Size: 27" x 20" x 16"	30500/-
Outside Size: 40" x 24" x 22"	37300/-

STAR-54	TUBE ROTOR FOR 36 TUBES	11900/-
---------	-------------------------	---------

Design for rotating test tube / culture tubes. having 10" dia. Suit able for 36 tubes of 16 / 30 tubes of 25 mm dia. The disc can be set at any angle. Suitable to works on 220V 50 AC only. With cord and plug complete with all accessories. Provided with 1 tube carrier.

Additional Rotating tube carrier	2300/-
Timer	3200/-

STAR-55	V.D.R.L. ROTATOR	9800/-
---------	------------------	--------

It is useful for VDRL test, serological and other tests requiring gentle rotation. With imported timer with variable speed from 70-210 RPM. The rotator has covered metal platform 13"x13" with spring holder clamp indicator lamp and on/off switch. Works on 220/230 volts AC.



STAR-52



STAR-148



STAR-53



STAR-55

CAT. NO.	DESCRIPTION OF ITEM	PRICES (PER UNIT) IN RUPEES
----------	---------------------	-----------------------------

STAR-56	VORTEX SHAKER (TEST TUBE SHAKER/CYCLO MIXER)	4900/-
----------------	---	---------------

Used for mixing of material inside the test tube. Variable speed, Neoprene cup impart vigorous agitation to tube or small flasks. With on/off switch and indicators, vacuum rubber fitted at the bottom to prevent (walking), complete with cord & plug.

Touch plate ON/OFF type **6000/-**
(Shaking starts when vessel is pressed against cup)

Deluxe model with attachments for flasks, tubes /micro tubes **14000/-**

STAR-57	UNIVERSAL SHAKING MACHINE	26000/-
----------------	----------------------------------	----------------

Shaking machine is used for dissolving of substances, mixing and speed up chemical reaction. It is made with the holding capacity of 4 no's of flask holder, 1 test tube and sieve holder. The shaking is regulated with a regulator with 30 to 50 strokes per minutes fitted at the bottom to prevent (walking).

Timer **3200/-**

STAR-58	SHAKING MACHINE (WRIST ACTION SHAKER)	
----------------	--	--

The machine is designed to hold flasks from 100 ml to 1000ml. The variable shaking speed is controlled by speed regulator fitted with fractional H.P. Motor to work on 220VAC. Complete with plug and cord.

To hold 4 flasks **14300/-**

To hold 8 flasks **20900/-**

To hold 4 flasks with top 4 bottle holders **24900/-**

To hold 8 flasks with top 8 bottle holders **35300/-**

Timer **3200/-**

STAR-59	KHAN (RECIPROCATING SHAKER)	
----------------	------------------------------------	--

Complete with carrier for flasks, test tube racks, bottles, etc. Speed is unaffected by normal line voltage fluctuation or leading with specified limit 0.25 H.P. Motor. With covered body with variable speed mechanical speed controller 150 to 250 strokes per minute

carrier size 20" x 13" x 4" **22600/-**

Carrier size 36" x 18" x 4" **28500/-**

Timer **3200/-**

STAR-60	WAGNER'S SHAKING MACHINE	
----------------	---------------------------------	--

Shaking machine frame is mounted on spindle with pulley for power drive and the spindle is supported on bearing on heavy metal upright base plate. It can accommodate bottle and flasks of various sizes from 500 ml to 1 liter. speed of 60 to 70 RPM, Fitted with ¼ H.P. motor to work on 220 volts single phase and with cord and plug.

Accommodate 6 bottles in 2 rows **17500/-**

Accommodate 12 bottles in 2 rows **22900/-**

Timer **3400/-**

STAR-61	ELISA PLATE SHAKER	15900/-
----------------	---------------------------	----------------

Platform is provided with springs to hold two Elisa plates firmly Fitted with a speed regulator & automatic timer.

STAR-62	GEL ROCKER / PLATFORM	15500/-
----------------	------------------------------	----------------

A metal platform with non slip rubber mat moves in a gentle see saw motion. The movement is controlled precisely with DC motor. Cushion and rubber feet prevents unit from slipping. Provided with 0-60 minutes timer. Platform size: 30 x 30 cm

Platform covering rubber mat.

Speed upto 20 oscillations per minute

Shaking type: See Saw.

Input Voltage: 230 volts, +/- 10%, 50 Hz. Single phase.



STAR-152



STAR-57



STAR-58



STAR-59



STAR-60

CAT. NO.	DESCRIPTION OF ITEM	PRICES (PER UNIT) IN RUPEES
----------	---------------------	-----------------------------

STAR-63	ORBITAL ROTARY SHAKER (MINI)	35000/-
----------------	-------------------------------------	----------------

Tray Size: 380 x 360 mm

Robust mechanical design for smooth and continuous operation Orbital motion, inter changeable trays for flat bottom vessel and flasks holders, Special rubber bush is fitted for anti-vibration floor grip, Speed 30 to 300 rpm, Platform size 380 x 360 mm, Orbital displacement 25 mm

Dimension 380 x 355 x 190 mm

---do---same as above but with Digital RPM

45000/-



STAR-64

STAR-64	MINI ROTARY SHAKER	28000/-
----------------	---------------------------	----------------

Closed body table top model Rotary shaker used for continuous shaking in flask, Mild Steel body, Fitted with variable speed regulator to control speed from 50 to 250 rpm Stainless steel platform of size 18" X 18", Provided with stainless steel lotus type clamps to hold the 9 flasks of 500ml or 16 flasks of 250 ml. or 25 flasks of 150 ml. or 36 flasks of 100/50 ml.. DC motor

OPTIONAL		
-----------------	--	--

1. Spare lotus clamps up to 100 ml.	250/-
2. Spare lotus clamps 250/500 ml	350/-
3. Digital RPM / Speed meter.	6000/-
4. Timer	3000/-



STAR-65

STAR-65	ROTARY FLASK SHAKER (HEAVY DUTY)
----------------	---

Designed with mild steel frame duly powder coated / painted. The platform is made of thick mild steel sheet duly painted fitted with rubber discs to hold Erlenmeyer flasks of different capacity. Platform is mounted on ball bearing crank shafts with an orbital dia. of approx 1.5" to 2". Heavy duty motor coupled by means of V-Belt with pitch pulley system is housed inside the frame. Speed can be controlled through a mechanical speed control system. DC motor drive with continuously variable mechanical speed control from 50 to 250 rpm. Work on 220/230 volts AC supply.

Flask Cap. (ml)	Platform Size (cm)				
	45x45	55x55	65x65	100x100	105x105
50	36	49	64	121	144
100	36	49	64	121	144
150	25	36	49	100	121
250	16	25	36	81	100
500	9	16	25	64	81
1000	4	9	16	49	64



STAR-66

Motor Cap.	¼ H.P.	½ H.P.	1 H.P.	1 H.P.	1 H.P.
Rates	24350/-	34550/-	42500/-	72000/-	92000/-
Rates of Spare Platform (if required)	5500/-	6000/-	7000/-	9600/-	10300/-

OPTIONAL ACCESSORIES	
-----------------------------	--

1. Digital RPM / Speed meter	6000/-
2. Timer	3500/-
3. Spare S.S. Clamps	300/-

STAR-66	FLOCCULATOR (JAR TESTING APPARATUS)
----------------	--

Estimate the dosing of alums and such other coagulants for treatment of water and effluent. Sample is easily viewed by diffused base illumination with florescent tube placed below plastic plate and black background. Fitted with D.C. motor of 1/20 HP with variable speed upto 180 RPM controlled by speed regulator. Provided with stainless steel paddles with adjustable spacers to adjust the depth of paddles

(a) For two Stirrers	18800/-
(b) For four Stirrers	25700/-
(c) For six Stirrers	33000/-



STAR-67

CAT. NO.	DESCRIPTION OF ITEM	PRICES (PER UNIT) IN RUPEES
----------	---------------------	--------------------------------

OPTIONAL ACCESSORIES

(a) Attachment for feeding to all the stirring units simultaneously	2500/-
(b) Revolution Counter to cost extra	2200/-
(c) Automatic 0-60 minute "German" Timer	3600/-

STAR-67 LABORATORY STIRRER

Unit is clamped to a C.P. rod fitted on a heavy cast iron base. Fitted with S.S. stirrer rod to give smooth and noiseless operation Fitted with variable speed motor & speed regulator. Maximum 4000 rpm. The height and angle of the stirrer can be adjusted according to the requirement.

(a) With 1/35 H.P. motor	6000/-
(b) With 1/20 H.P. motor	7000/-
(c) With 1/8 H.P. motor	9000/-
(d) With 1/8 H.P. motor (Geared)	10000/-
(e) With 1/4 H.P. motor	13500/-
(f) With 1/2 H.P. motor	18200/-

OPTIONAL ACCESSORIES

(a) Automatic 0-60 minutes "German" Timer	3500/-
---	--------

STAR-68 EMULSIFIER (HOMOGENIZER)

The unit is having arrangement for moving in horizontal and vertical direction (completed on stand). Fitted with F.H.P. motor having speed regulator and maximum speed 4000 RPM with perforated stainless steel disc.

(A) With 1/20 H.P. motor and S.S. disc and speed regulator	13700/-
(b) -do-with 1/4 H.P. heavy duty motor and speed regulator	18200/-
(c) -do-with 1/2 H.P. heavy duty mother and speed regulator	23200/-

STAR-69 SIEVE SHAKER (TABLE TOP)

Works on 220/230 volts AC, fitted with a FHP motor, it can accommodate 6 sieves of 6" to 8" dia. Speed is regulated through a continuously variable speed regulator fitted to the unit.

(a) For 8" dia sieves	18900/-
(b) For 12" dia sieves	23500/-

OPTIONAL ACCESSORIES

(a) Automatic 0-60 minute "German" Timer	2500/-
--	--------

STAR-70 GYRATORY SIEVE SHAKER 32500/-

To carry upto 7 sieves to 8" dia it is driven by 1/4 HP electric motor, through reduction gear. The sieve table doesn't rotate but is inclined from the vertical axis the direction. In addition to the gyratory motion of the table, there is an upward and downward movement ensuring that each square inch of the sieve is utilized. To works on 220/230 Volts single phase AC. Supplied complete with adaptor for 8" sieves but without test sieves.

OPTIONAL ACCESSORIES

(a) Adaptor for 12" sieve	3900/-
(b) Automatic 0-60 minute "German" Timer	3300/-

STAR-71 ROTAP SIEVE SHAKER 46500/-

To carry up to 7 sieves of 8" dia it is driven by 1/4 HP electric motor, through reduction gear. The whole gear mechanism which gives circular end to end motion runs in oil bath. The tapping motion is given by hammer from top. Works on 220/230 volts single phase AC.

OPTIONAL ACCESSORIES

(a) Automatic 0-60 minute "German" Timer	2500/-
--	--------



STAR-68



STAR-69



STAR-70



STAR-71

CAT. NO.	DESCRIPTION OF ITEM	PRICES (PER UNIT) IN RUPEES
----------	---------------------	-----------------------------

STAR-72	TEST SIEVES	1550/-
----------------	--------------------	---------------

Available in fine series of various standard such as BSS/ASTM/ISI/Microns/mm, in 8" dia

COARSE 600/-
 Made of perforated steel plate with square holes, available in following apparatus 125, 160, 100, 90, 80, 75, 63, 53, 50, 45, 40, 37.5, 26.5, 25, 22.4, 19, 16, 13.2, 12.2, 11.2, 10, 9, 5, 8, 6, 7, 6.3, 5.6, 4.75, 2.8mm. available in brass frame of 8" dia

STAR-73 **MAGNETIC STIRRERS**
 Top is made of Stainless Steel, a permanent magnet creates a rotating magnetic field. Stirring is done by small Teflon rotor, placed in the liquid placed in a container. Designed with or without hot plate as per requirement. Temperature is controlled by sunvik energy regulator. Maximum speed 1200 RPM. Works on 220/230 VAC.

CAPACITY	WATTAGE	WITHOUT HOT PLATE	WITH HOT PLATE
1 / 2 ltrs	300 W	3000/-	5000/-
5 ltrs	500 W	5000/-	6500/-
10 ltrs	600 W	9500/-	11500/-

Spare Teflon Paddle 300/-

STAR-74 **MULTI MAGNETIC STIRRERS**
 same as above but multi test units of cap. 2 ltrs each are in manifold for 3 or 6 units, and works on 220/230 Volts AC supply.

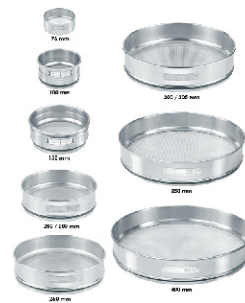
	WITHOUT HOT PLATE	WITH HOT PLATE
Manifold for 3 test units	15400/-	21000/-
Manifold for 6 test units	28400/-	32500/-

STAR-75 (A) MELTING POINT APPARATUS (Analog Model) 2700/-
 This determines the melting point of substance upto 350 deg C. Aluminum block accepting 3 capillary and a thermometer. Maximum temp upto 350 deg C having low/high temperature provision with energy regulator The mounted block is illuminated by a lamp fixed from below. The lamp provides uniform illumination to the unit. Works on 220/230 VAC.

(B) DIGITAL MELTING POINT APPARATUS 19500/-
 - do- same as above but Digital Model with Digital Temperature Indicator, Energy Regulator, Push Button for Stop of Temperature, with fan for cooling

STAR-76 **DIGITAL MELTING POINT APPARATUS (FULLY AUTOMATIC)** 98000/-
 Digital Display, it consists of sensors to precisely measure the melting point. It is provided with small furnace for uniform heating of the substance. At the melting point the transparency of the sample is change which is accurately sensed by electronic circuit and the same temperature is displayed directly in LCD display. At the time heating is automatically off with buzzer. And the air circulation system which is incorporated the system starts. The melting point is displayed on the panel till the clear press switch is not pressed. The range is upto 300 deg C. Readability 1 deg C, works on 220 / 230 Volts.

STAR-77 **INFRARED MOISTURE BALANCE**
 Used for the determination of moisture contents in the materials Designed in portable size for field and laboratory use. The instrument can directly calibrated the moisture in percentage. The instrument has been utilized for reliable determination of moisture contents of materials that do not change their chemical structure while loosing water when exposed to I.R. Radiation like agricultural soils, foods, chemicals, plastics, pharmaceuticals, etc. in these balanced drying and weighing are simultaneous. Scale is divided from 0 to 100% with pans etc infra-infrared moisture balance (5gm. Capacity) 14500/-
 Infra-red moisture balance (10gm. Capacity) 15500/-
 Infra-red moisture balance (20/25gm. Capacity) 16500/-



STAR-72



STAR-73



STAR-75



STAR-77

CAT. NO.	DESCRIPTION OF ITEM	PRICES (PER UNIT) IN RUPEES
----------	---------------------	--------------------------------

OPTIONAL

Automatic timer 3000/-

STAR-78 SOIL MOISTURE METER

A) Analog Model, Range 0% - 100%, accuracy +4% hand held size 34000/-

B) Digital Model Range 7%-40%, Temp. Compensation Automatic, LCD display, Application Sand, Clay, Sensor 600 mm 98000/-

STAR-79 ROTAVATOR

For quick preparation of soil for sowing purpose. 88000/-
Can be attached to a tractor

STAR-80 GRAIN MOISTURE METER DIGITAL

40500/-

STAR-81 WOOD MOISTURE METER

7000/-

STAR-82 WILLEY GRINDER (ARTHUR H. THOMAS TYPE)

The chamber is fabricated out of M.S. Fitted with a hopper & provided with a cover. Three delivery S.S. sieves brush, L-N key and plastic receiver are supplied. A removable plexi glass plate permits observation during operation.

Chamber Size	Motor Cap.	M. Steel Chamber	S.S. Chamber
40x25 mm	0.25 H.P.	17850/-	21000/-
65x25 mm	0.25 H.P.	20300/-	24000/-
100x50 mm	0.50 H.P.	27500/-	48000/-
200x75 mm	1.00 H.P.	53000/-	86000/-

STAR-83 BALL MILL (LABORATORY TYPE)

Electrically operated, maximum speed 80 RPM, fitted with a 1 ¼ FHP motor and with steel balls for mixing and grinding. Capacity from a few gms. To 1/2/5 kg. Works on 220 volts AC mains. Provided with aluminium / Stainless steel jar.

Capacity	Aluminium	Stainless Steel
1 kg. Jar	13500/-	18200/-
2 kg. Jar	18900/-	22500/-
3 kg. Jar	34700/-	42300/-

OPTIONAL ACCESSORIES

(a) Automatic 0-60 minute "German" Timer 3500/-

STAR-84 A) ROTARY VACUUM EVAPORATOR (BUCHI TYPE) (VARIABLE SPEED MOTOR)

Vacuum Rotary Evaporator with continuous variable speed motor, Glass condenser, rotating flask & heavy stand with quick action jack & without vacuum pump flask capacity 1 ltr.

(a) With thermostatic water bath 42000/-

(b) With digitally controlled water bath 45000/-

B) Capacity 3 ltr.

(a) With thermostatic water bath 74000/-

(b) With digitally controlled water bath 76500/-

C) Capacity 5 ltr.

(a) With thermostatic water bath 112000/-

(b) With digitally controlled water bath 118000/-



STAR-78



STAR-79



STAR-81



STAR-82



STAR-83



STAR-84



Great Innovations to Protect

CAT. NO.	DESCRIPTION OF ITEM	PRICES (PER UNIT) IN RUPEES
----------	---------------------	--------------------------------

OPTIONAL:			
(a) Chiller up to 5 deg C			47000/-
(b) -----do -20 deg C			74000/-
(c) Voltage Stabilizer for Chiller			6000/-
(d) Digital RPM indicator			5000/-
(e) Vacuum Pump (Single Stage)	1 ltr	3 ltr	5ltr
	14900/-	17900/-	28500/-

STAR-85 ROTARY VACUUM EVAPORATOR PREMIUM

Vertical unit to concentrate & analyze the samples with the facilities of speed variation. Heating at constant temperature through digitally controlled water bath vertical freezing. Motor speed 10-120 rpm motorized up & down temperature range 0-100 deg C with digital display. Motorized lift for up & down movement with the option of manual

capacity: 1 ltr	98500/-
capacity: 3 ltr	188000/-
Capacity: 5 ltr	238000/-

OPTIONAL:			
(a) Chiller up to 5 deg C			47000/-
(b) -----do -20 deg C			74000/-
(c) Voltage Stabilizer for Chiller			6000/-
(d) Digital RPM indicator			5000/-
(e) Vacuum Pump (Single Stage)	1 ltr	3 ltr	5ltr
	14900/-	17900/-	28500/-

STAR-86 ROTARY VACUUM PUMP

Vacuum pumps are mounted on a heavy steel base plate and have a wide range of sealed pumps. Fitted with heavy duty electric motor, all pumps are V-Belt driven at a speed of 400 RPM. Pumps are fabricated out of high grade cast iron and are worked on sophisticated machines to give accuracy in microns, thus leading to very high sustained vacuum. Supplied in single stage or double stage models. As a safety device all "ICON" vacuum pumps are fitted with belt guard as a standard feature. To work on 220/230 volts A.C. supply.

	Motor Cap.	Chamber Size	
		Single Stage	Double Stage
25 ltr/min	0.25 H.P.	12000/-	16500/-
50 ltr/min	0.25 H.P.	14000/-	22000/-
75 ltr/min	0.25 H.P.	16000/-	24900/-
100 ltr/min	0.50 H.P.	19000/-	27500/-
150 ltr/min	0.50 H.P.	21000/-	28500/-
200 ltr/min	1.00 H.P.	25000/-	32500/-
300 ltr/min	1.50 H.P.	30000/-	41000/-

Following Accessories may be Supplied on extra cost

(a) Vacuum Gauge	1200/-
(b) Non Return Valve	2500/-
(c) Moisture Trap	2500/-
(d) Oil (P/Ltr.)	300/-

STAR-87 VACUUM-CUM-PRESSURE PUMP (MONOBLOCK BELTLESS) with oil

With suitable motor

(a) Capacity 45 ltrs. Fitted with ¼ H.P. Motor	11500/-
(b) Capacity 75 ltrs. Fitted with ½ H.P. Motor	16000/-

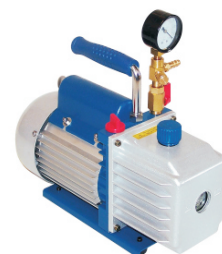
STAR-88 VACUUM-CUM-PRESSURE PUMP (DIAPHARGM TYPE)

With suitable motor, it is also double stage pump and creates the vacuum through a diaphragm

(a) Capacity 25 ltrs. Fitted with ¼ H.P. Motor	11000/-
(b) Capacity 45 ltrs. Fitted with ½ H.P. Motor	18000/-
(c) Capacity 75 ltrs. Fitted with ½ H.P. Motor	22000/-



STAR-86



STAR-87



STAR-88

CAT. NO.	DESCRIPTION OF ITEM	PRICES (PER UNIT) IN RUPEES
----------	---------------------	-----------------------------

STAR-89 A) ULTRASONIC CLEANING BATH

Manufactured with advanced MOSFET technology, with auto-tuning facility, Digital tuning of transducers with generators to avoid any frequency shifted even during demanding applications, Compact, rugged and highly durable system, Extensively protected electronic circuits means longer and safer operations, High frequency electrical energy is converted into ultrasound waves by means of ULTRASONIC TRANSDUCERS, Designed for rapid cleaning of small & large intricate parts and various instruments used in scientific and medical fields, Tank made of stainless steel, Operating frequency 33KHz±3KHz, Fitted with digital timer as a standard feature, Fitted with digital temperature indicator-cum-controller Supplied with network basket, To work on 220/230 volts AC supply



STAR-89 A

CAPACITY	PRICE
1.5 ltrs	31000/-
3.0 ltrs	37000/-
6.5 ltrs	53000/-
9.0 ltrs	71000/-
20.0 ltrs	98500/-

B) ULTRASONIC PROBE SONICATOR (ULTRASONIC PROCESSOR) 196000/-

Ultrasonic Processor (Probe Sonicator) is a tool specially designed for pharmaceutical, chemical labs and various research institutes. Ultrasonic Generator to produce high electrical energy operating at a frequency of 20KHz and an Ultrasonic power 120watts. S.S. velocity horn fitted with PZT crystals (Transducer elements). This velocity horn assembly converts the electrical frequency energy fed from the ultrasonic generator to mechanical vibrations at the rate of applied electrical frequency. The amplitude of these mechanical vibrations are magnified by this velocity horn.



STAR-89 B



STAR-90

STAR-90 POLARIMETER

Mounted on a heavy casted streamlined body. Suitable for routine testing of sugar solution and other optically active liquids, designed to accommodate 220 mm tubes. Both angular and sugar scale. The angular scale from 0 to 360 degree is subdivided to 1 degree to enable direct reading to 0.05 degree and by estimation to 0.02 degree. The sugar scale from 30 degree to 120 degree I.S.S. unit enable direct reading to 0.1 and by estimation to 0.05 sugar degrees. Instruction manual and dust cover.

AVAILABLE FOLLOWING SIZE

(a) Tube size 220 mm with rotating half shadow	26000/-
(b) Tube size 400 mm with rotating half shadow	32000/-

OPTIONAL ACCESSORIES

Sodium vapour lamp (35 watts) with heavy duty leak transformer with housing/pipe fitting with holder 4500/-



STAR-91

STAR-91 TISSUE PROCESSING UNIT 18500/-

It has a sturdy stainless steel basket, a rotor and 24 tissue capsules. Complete with a thermostatically controlled wax bath.



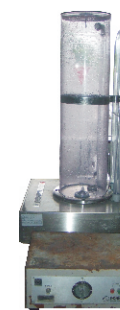
STAR-92

STAR-92 GLASSWARE DRYER 27500/-

A powerful and heavy-duty electrically driven blower of variable speed fitted at the base, which force air through 36 heating coils fitted with energy regulator are provided above the blower to heat the blown air through the brass tubes. To work on 220 volts AC supply.

STAR-93 PIPETTE DRYER 8000/-

Used for pipette drying, Made of stainless steel. A low heater is fitted in base chamber it takes Burettes, columns and other glassware upto 375 mm long. Suitable to operate on 220 volts 50 cycles AC



STAR-93

STAR-94 PIPETTE WASHER 5300/-

Operates on siphoning principal, consist of stainless steel washing cylinder removable pipette holder to accommodate pipettes up to 375mm length

CAT. NO.	DESCRIPTION OF ITEM	PRICES (PER UNIT) IN RUPEES
----------	---------------------	--------------------------------

STAR-95 SLIDE WARMING TABLE

5900/-

Slide warming table is used for cytology, histology, pathology, biology and clinical laboratories which are engaged in paraffin tissue embedding and section mounting. It provides uniform heat transfer over the entire surface. The work surface is made up of stainless steel and it is good for specimen contrast. The temperature is controlled up to 70 deg C filled with sunvic energy regulator and an adjustable thermostat.

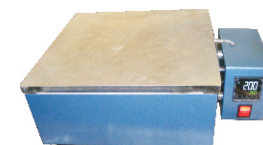


STAR-94

STAR-96 RECTANGULAR HOT PLATE (WITH CAST IRON TOP)

Body made of perforated P.C.R.C. sheet with cast iron top duly enamel painted, insulated elements. For continuous heating up to 350 deg C. Works on 220/230 volts AC.

With Energy Regulator/Thermostat



STAR-95

Size (BxLxH)	With Cast Iron Top	With S. S. Top
25x30x15 cm	4000/-	9000/-
25x40x15 cm	5900/-	11900/-
30x45x15 cm	8600/-	16500/-
45x60x15 cm	11500/-	22500/-



STAR-96

OPTIONAL ACCESSORIES

(a) Pyrometer with thermocouple	4300/-
(b) Digital Temperature indicator-cum-controller	6000/-

STAR-97 HOT PLATE ROUND

Body is made of P.C.R.C. sheet duly painted. Temperature is controlled by energy regulator up to 350degree C. The top cast iron heating plate is round having 20cm.

(a) Single plate with Energy regulator	2000/-
(b) Double plate with individual energy regulators	4900/-
(c) Hot plate round (17.5 cm dia) rating 1 KW	2000/-
(d) --do-- same as above but coil type	3500/-



STAR-97

STAR-98 KJELDHAL DISTILLATION UNIT WITH ENERGY REGULATORS

Useful for distillation purpose for the flask capacity of 300ml and 500ml. Provided with condenser rack. Works on 220 / 230 volts AC supply. (without glass parts & clamps)

	Mantle Type	Concealed Hot Plate type
Unit of 3 test	6000/-	7500/-
Unit of 6 test	8500/-	10500/-



STAR-98

STAR-99 KJELDHAL DIGESTION UNIT WITH ENERGY REGULATORS

Useful for estimation of Nitrogen content in the substance by digestion of 300 & 500ml capacity flask. Provided with pair of hangers, Works on 220 / 230 volts AC supply (Without glass parts & clamps)

	Mantle Type	Concealed Hot Plate type
Unit of 3 test	6000/-	7500/-
Unit of 6 test	8500/-	10500/-



STAR-100

Glass parts & tube for above

Unit of 3 test	5000/-
Unit of 6 test	8000/-

STAR-100 KJELDHAL DISTILLATION & DIGESTION UNIT COMBINED WITH ENERGY REGULATORS

Provided with condenser rack lead fume duct and hangers with M.S. stand. (without glass parts & Clamps)

CAT. NO.	DESCRIPTION OF ITEM	PRICES (PER UNIT) IN RUPEES
----------	---------------------	--------------------------------

	Mantle Type	Concealed Hot Plate type
Unit of 3 test	14100/-	16500/-
Unit of 6 test	18900/-	23500/-

Glass parts & tube for above

Unit of 3 test	9000/-
Unit of 6 test	14500/-

STAR-101 KJELDHAL-MICRO-DIGESTION-UNIT-WITH ENERGY REGULATORS

Used for estimation of nitrogen content in the substance by digestion in micro flasks of capacity 30, 50 & 100ml. Supplied with LEAD FUME DUCT. The housing made of M. Steel duly stove enamel painted. Unit of 6 test mantle type (without glass parts & clamps) 7000/-

OPTIONAL

Glass parts and rubber tubing	3900/-
-------------------------------	--------

**STAR-102 SOXHLET EXTRATION UNIT WITH ENERGY REGULATORS
(Without glass parts & clamps)**

	Mantle Type	Concealed Hot Plate type	Glass parts with Suitable tubing
Unit of 3 test	6000/-	7500/-	7000/-
Unit of 6 test	8500/-	10500/-	14500/-

**STAR-103 TUBE HEATING BLOCK / DRY BATH (FOR 40 TUBES)
With "Sunvik" UK energy regulators deluxe model** 18500/-

OPTIONAL ACCESSORIES

(a) Coming Glass tube for above (per each tube)	50/-
---	------

STAR-104 HEATING MANTLE (Made from Glass Yarn)

It maintains high temperature up to 350 deg C. The body of the mantle is spun one piece from non-rusting aluminium (upto 5.0 lt. Capacity) duly powder coated painted. All heating elements are lagged with special grade mineral wool.

To work on 220 / 230 volts AC

Capacity	With energy regulator	Spare Mantle
50ml or 100ml	1300/-	450/-
250ml or 500ml	1450/-	450/-
1 ltr.	1530/-	500/-
2 ltr.	1750/-	550/-
3 ltr.	1820/-	600/-
5 ltr.	2560/-	800/-
10 ltr.	5100/-	1400/-
20 ltr.	6000/-	1800/-

**STAR-105 DISTILLATION APPARATUS ALL GLASS (ELECTRICALLY HEATED)
(AS PER NPL PATTERN)**

Flask Capacity	Single Stage	Double Stage	Triple Stage
3 liters	14900/-	25500/-	36000/-
5 liters	16000/-	27000/-	38500/-
10 liters	22500/-	36500/-	51000/-

OPTIONAL ACCESSORIES

(a) Automatic Low Water Level Cut-off Device (for single and double stage)	2500/-
(b) Automatic Low Water Level Cut-off Device (for triple stage)	4200/-
(c) Special grade rubber tubing (Coil of 10 meters)	450/-

Spare distillation flask / double walled condenser



STAR-102



STAR-104



STAR-105

CAT. NO.	DESCRIPTION OF ITEM	PRICES (PER UNIT) IN RUPEES
----------	---------------------	--------------------------------

Capacity	Distillation Flask	Condensor
3 liters	3000/-	2900/-
5 liters	3500/-	3000/-
10 liters	6000/-	4000/-

STAR-106 DISTILLATION GLASS APPARATUS (HORIZONTAL TYPE WITH SILICA HEATERS)

Glass distillation has a elegant design. The unit is economical and at the same time efficient. Sufficient output: The still yields in output of 1.5 ltr/ hr. distilled water for a power consumption of 1.25 KW single phase through a silica heater which is inside a horizontal Glass Boiler. The out put temperature of distillate is 40 deg C (approx), which is taken care by efficient cooling by coiled Borosilicate condenser. The unit is mounted on a sturdy metal stand. The silica heater is provided with B29 silicon rubber sleeves which makes the cleaning of the boiler easy. The boiler can be cleaned with water as well as with acids for maintenance, which is an advantage of silica heater The above quality of distillate is obtained by using treated water as boiler feed. All rubber tube connections can be made with threaded connectors. Quality of Distillate is best for general Laboratory usage. The conductivity of water is approx 1.5-2 M-cm. The pH of distillate is 5.5 to 6. PYROGEN FREE. The unit when used in series i.e. the output of first unit will be the input of the second unit, the distillate obtained from it is double distilled water with better conductivity and pH.



STAR-106

	Single Stage	Double Stage
A) Glass Distillation Unit	26300/-	42500/-
B) Quartz Horizontal Model		
2 Ltr.	112500/-	146000/-
4 Ltr.	238500/-	261500/-

STAR-107 DISTILLATION APPARATUS (With Quartz Boiler and Corning Condenser)
Fitted with Automatic low water level cut-off device.

Flask Capacity	Single Stage
0.5 lit/hr	26600/-
1.0 ltr/hr	30500/-
1.5 ltr/hr	33800/-
2.0 ltr/hr	37000/-
2.5 ltr/hr	42000/-
3.0 ltr/hr	46800/-
4.0 ltr/hr	56000/-



STAR-107

(B) ALL QUARTZ: With Quartz boiler and quartz condenser, vertical assembly provided with automatic low and high water cut off device and provision of auto switch on resumption of the water supply. Provided with mild steel duly enamel painted stand with iron clamps etc. Provided with all necessary tubes and fittings. Ease of washing the chamber for freeing salt depositons. Works on 220V +-9% single phase 50 Hz AC

FLASK CAPACITY	SINGLE STAGE	DOUBLE STAGE
1.0 ltr/hr	68800/-	98900/-
1.5 ltr/hr	73900/-	120800/-
2.0 ltr/hr	86600/-	129000/-
2.5 ltr/hr	98000/-	156000/-
3.0 ltr/hr	120000/-	198000/-
4.0 ltr/hr	128000/-	251500/-
5.0 ltr/hr	133000/-	298000/-

STAR-108 WATER STILL AUTOMATIC

Water still automatic (for Pyrogen free Distillation water) Manesty type wall mounting single walled, made of SS, fitted with kettle element with ejection device/auto cut for safety. Electrically operated, suitable to work on 220/230V.



STAR-108

CAT. NO.	DESCRIPTION OF ITEM	PRICES (PER UNIT) IN RUPEES
----------	---------------------	--------------------------------

S. Steel	2 ltrs/hr	2 KW	5000/-
S. Steel	4 ltrs/hr	3 KW	5500/-
S. Steel	6 ltrs/hr	4.5 KW	6700/-
S. Steel	8 ltrs/hr	6 KW	9000/-
S. Steel	10 ltrs/hr	7.5 KW	9600/-

STAR-109 DISTILLATION APPARATUS (BARNSTEAD PATTERN)

Table model S.S. approx. output, double walled, gap between outer & inner walls is filled with high efficiency mineral wool. With kettle element with ejection device/auto cut for safety. Electrically operated, suitable to work on 220/230V.

3 lit Per Hr.	2 KW	8500/-
4 lit Per Hr.	3 KW	9600/-
6 lit Per Hr.	4.5 KW	12000/-
10 lit Per Hr.	6 KW	14500/-

STAR-110 WATER STILL (DISTILLATION) AS PER IS SPECIFICATION):

It is a free standing electrically operated water still capable of producing pyrogen free distilled water as per IP/BP standards. All contact parts are made of stainless steel having immersion water heater, low water protection & electrical control box. Mounted on a sturdy MS tubular stand. The unit is made as per IS 3830.

5 lit/hr	37000/-
10 lit/hr	54000/-
20 lit/hr	69500/-

STAR-111 DEIONIZER

DOUBLE BED DEIONIZER: TREATED WATER CONFIRMS TO ISI 1069/64

Unique feature conductivity meter with linear scale operates on AC/DC of 9 volts battery cell. Non Corrosive Regeneration Tank. High capacity cat ion & Anion exchange resin up flow treatment. Portable metallic stand with wheels. Can directly be connected to tap water.

Model No.	70	100	150	200	300	500
Output/Hour	70	100	150	200	300	500
Prices	19160/-	22640/-	27800/-	32960/-	44600/-	57800/-

FOUR BED DEIONIZER: It consists of 4 beds i.e. pre-filter, Activated Carbon Cation Anion Column. Consists of: Inbuilt prefil, cation and anion resin columns, conductivity meter operators on AC/DC (9V batter cell). Deionised water will have conductivity of less than 10ms/cm and PH of 7.5 to 8.5

Model No.	70	100	150	200	300	500
Output/Hour	70	100	150	200	300	500
Prices	22880/-	29360/-	39800/-	46640/-	49640/-	69800/-

MIXED BED DE-MINERALIZER: CONFIRM TO ISI 100/60:

This mixed bed de mineralizer is used as polishing unit with double or four bed dematerialize.

Model No.	70	100	150	200	300	500
Output/Hour	70	100	150	200	300	500
Prices	20000/-	27800/-	37400/-	42200/-	50600/-	66200/-

NOTE: For raw water having TDS of 100-500 PPM it is advised to install a MIXED BAD UNIT (MB Series) in combination/series to a DOUBLE BED UNIT (CA Series) of the same capacity (i.e. CATION-ANION-MIXED BED)

DOUBLE STAGE DE-MINERALIZER: CONFIRM TO ISI 100/60: For raw water having TDS upto 1200 PPM it is advised to install two DOUBLE BED UNITS in built prefilter, two sets of high exchanging capacity cation & anion resin column, i.e. cation-anion, cation-anion resin column in series with demineralised water having the conductivity of less than 2 micro siemens/cm & pH of 7.5 to 9.

Model No.	70	100	150	200	300	500
Output/Hour	70	100	150	200	300	500
Prices	25400/-	31400/-	34400/-	41000/-	50600/-	69800/-



STAR-109/110



STAR-111

CAT. NO.	DESCRIPTION OF ITEM	PRICES (PER UNIT) IN RUPEES
STAR-112	MEDICO CENTRIFUGE*	4500/-
	Medico-Centrifuge for 4 tubes with swing out head 3500 RPM ---do---same as for 8 tubes Angel Head 5000 RPM	6000/-
STAR-113	PATHOLOGICAL CENTRIFUGE	8900/-
	Laboratory Table top model. Angle Rotor Head with see through acrylic cover. Maximum speed up to 4500 RPM and Max. RCF 2050 xg. Provided with a speed control 1.5 ml	
STAR-114	(A) LABORATORY TABLE CENTRIFUGE DIGITAL	13900/-
	Bench Top with Digital speedometer, Digital timer of range 0-59 minutes and variable speed regulator. Maximum speed 5200 r.p.m. (without load). Fitted with light weight double walled lid made of ABS plastic moulding. (Supplied without rotor)	
	(B) LABORATORY TABLE CENTRIFUGE DELUXE MODEL	27600/-
	---Do--- Same as above STAR-113 (a) but this model having extra features such as electronic inter lid lock, magnetic dynamic brake, imbalance detector (Without Rotor Head)	
Rotor Heads for above		
i)	16x15ml. Swing Out Head	3000/-
ii)	12x15ml. Swing Out Head	3000/-
iii)	8x15ml. Swing Out Head	2000/-
iv)	6x50ml. Swing Out Head	2700/-
v)	4x50ml. Swing Out Head	2000/-
vi)	16x15ml. Angle Head	2500/-
vii)	12x15ml. Angle Head	2500/-
viii)	8x15ml. Angle Head	2000/-
ix)	6x50ml. Angle Head	2000/-
x)	4x50ml. Angle Head	2000/-
xi)	4x100ml. Angle Head	2000/-
xii)	24x15ml. Angle Head	5000/-
STAR-115	A) LABORATORY MICRO CENTRIFUGE	27000/-
	High speed Micro Centrifuge, See thru acrylic lid, Fitted with well balance universal motor having long life imported carbons, Digital timer 0-15 minutes, Digital speed indicator (RPM Meter), Max RPM 16000 which can be controlled by various speed regulator. Supply completed with following accessories: Rotor Head to accommodate 12 ependrof (Centrifuge tubes with cover) of 1.5/2 ml, Reduction adapters for 0.5ml ependrof (Micro Centrifuge tubes), Head Puller, Spanner, Cord & Plug to work on 220 volts 50Hz AC.	
	B- LABORATORY CENTRIFUGE HIGH SPEED (BRUSHLESS MOTOR)	68000/-
	High speed Micro Centrifuge, Fitted with brushless automatic balanced motor, Digital timer 0-99 minutes, Digital speed indicator, Programmable speed regulator, Electronic safety lid lock, Imbalance detector, Max. Speed: 20000 rpm, Max. RCF: 27800xg, Timer: 0-99 min, (Without Rotor Head)	
Rotor Heads for above		
i)	12x1.5/2 m Speed 2000 rpm	7000/-
ii)	24x1.5/2 5ml Speed 16000 rpm	11300/-
iii)	12x10ml Speed 15000 rpm	11400/-
iv)	10x5 ml Speed 16000 rpm	11500/-
STAR-116	REFRIGERATED CENTRIFUGE MEDIUM	183000/-
	Cooling Microfuge with Stepless speed regulator with zero start interlock, Digital speed indicator, Dynamic brake, 0-99 minutes digital count down timer, Imbalance cutout, Door interlock, Digital temperature controller cum indicator. max. speed 15900 rpm, Lowest temp. 0 deg C, Connected load: 1KVA, Max. RCF 19820 RCF	



STAR-112



STAR-113



STAR-114



STAR-115



STAR-116

CAT. NO.	DESCRIPTION OF ITEM	PRICES (PER UNIT) IN RUPEES
----------	---------------------	--------------------------------

Rotor Heads for above		
i)	10x2ml.	3500/-
ii)	24x1.5ml.	5500/-
iii)	8x5ml.	9000/-

STAR-117 REFRIGERATED MICRO CENTRIFUGE (ECONOMY MODEL) 92000/-
 Table top refrigerated micro centrifuge machine. Temperature range from ambient to -8 deg C & controlled by PID Electronic Digital temp. Controller cum indicator. With variables speed controller, digital speed indicator, Digital timer 0-15 minutes. Maximum rpm 16000, (supply without Rotor Head)

Rotor Head for above		
i)	12x1.5/2 ml Speed 16000 rpm	8000/-
ii)	8x15ml Speed 10000 rpm	12390/-
iii)	24x1.5/2 ml Speed 16000 rpm	13300/-
iv)	4x50 ml Speed 10000 rpm	14300/-

STAR-118 REFRIGERATED CENTRIFUGE
 Brush-less induction motor with frequency drive, Precise speed control and reproducibility, Pre setting of speed, temperature and time, Digital speed indicator, 0-99 minutes digital timer, Digital temperature indicator-cum-controller, Dynamic brake & Imbalance detector with cutoff, Safety lid interlock to prevent cover opening during centrifugation, Speed holding accuracy 100 RPM

Max. Speed rpm	7000	20000	20000
Max. Tube size ml	200	100	200
Max. Capacity ml	1200	400	1200
Lowest temp. deg C	-8	-8	-8
PRICE PER UNIT	286000/-	283000/-	298000/-

Voltage Stabilizer 21000/-

ROTOR HEAD		
a)	4 x 100 ml Angular plastic speed 14500, RCF 23980 g	27000/-
b)	6 x 50 ml Angular plastic speed 18000, RCF 31880 g	20400/-
c)	8 x 25 ml Angular Plastic speed 14500 rpm, RCF 20220 g	20400/-
d)	12 x 15 ml Angular plastic speed 18000, RCF 31150 g	20400/-
e)	6 x 25 ml Angular plastic speed 18000, RCF 28980 g	20400/-
f)	8 x 15 ml Angular plastic speed 20000, RCF 33990 g	20400/-
g)	8 x 50 ml Angular Plastic speed 14500 rpm, RCF 24680 g	27000/-
h)	24 x 1.5 ml Angular Plastic speed 20000 rpm, RCF 37570 g	14500/-

STAR-119 FREEZE DRYER (LYOPHILIZER)
 Freeze dryer is ultimate in a compact, economical freezer. These lightweight, portable units are affordable enough for even the most tightly budgeted laboratories. Permanently installed, drying chamber has 1/2" and 3/4" ports to accommodate flasks. Higher model Stainless steel condenser removes more than 2 liters of water in 48 hours; can collect upto 4.5 liters of ice before defrosting is required. To facilitate defrosting, a retractable condensate drain line is easily accessible through the back of the cabinet. Individual gauges monitor temperature and vacuum.

Features:
 Lyophilization is the most way to preserve living cells, whole blood, vaccines, biological specimens, Temperature and vacuum gauge are easy to monitor, Clear lid provides view if ice build-up, Retractable Drain hose are easily accessible for convenient service, High capacity refrigeration system ensures rapid cooling, Mobile cabinet is attractive and durable, Temperature ranges from ambient to -40/-60/-70 deg C, Digital temperature controller cum indicator for easy readability, Hermatic type sealed compressor is used in refrigeration systems for durability and trouble free performance, Condensation trap, vacuum drum are made of stainless steel.



STAR-117



STAR-119

CAT. NO.	DESCRIPTION OF ITEM	PRICES (PER UNIT) IN RUPEES
A) Only Cooling system of Lyophilizer (without vacuum system)		
Temperature	-40 deg C	-60 / -70 deg C
Capacity 3 liters	249000/-	297000/-
Capacity 5 liters	273600/-	343000/-
B) Vacuum system for Lyophilizer		
Capacity 3 ltr	153500/-	261000/-
Capacity 5 ltr	163900/-	277900/-

TISSUE CULTURE EQUIPMENTS

STAR-120 PHOTO SIMULATOR / ELECTRONIC BALLAST 250/-

These produces broad spectrum simulated Natural light 400 to 750 nm from gen. Tube light

STAR-121 PAR LAMP 2200/-

STAR-122 PHOTO PERIODIC SIMULATION CASTOR RACK 35300/-

Frame is made of 25 x 25 mm square pipe with siemens gray / off white colour. Four no's of castor wheels are provided for easy mobility of rack. Shelf size 125 x 52.5 cm (50" x 21") Height 150 cm 5' Shelf to shelf distance 37.5 cm (15") Shelf base is made of good quality helium sheet. Provided with 5 shelves, out of which 4 are illuminated. Four no's of tube light is fitted with every shelf (i.e. total 16 tube lights) to produce excellent photo simulated light illumination: 1.2K Lux at 5 cm above shelf level ^ 8K lux at 15 cm above shelf level separate switch if provided for each tube light. Electronic ballast is connected with every tube light. 200-220 VAC single phase.

Same as above but with 4 no's PAR Lamps i.e. one in each shelf 52000/-

STAR-123 PHOTO PERIODIC SIMULATION CASTOR RACK 44000/-

Frame is made of 25 x 25 mm square pipe with siemens gray / off white colour. Four no's of castor wheels are provided for easy mobility of rack. Shelf size 125 x 52.5 cm (50" x 21") Height 187.5 cm (75") Shelf to shelf distance 37.5 cm (15") Shelf base is made of good quality helium sheet. Provided with 6 shelves, out of which 5 are illuminated. Four no's of tube light is fitted with every shelf (i.e. total 20 tube lights) to produce excellent photo simulated light illumination: 1.2K Lux at 5 cm above shelf level & 8K lux at 15 cm above shelf level separate switch if provided for each tube light. Electronic ballast is connected with every tube light. 200-220 VAC single phase.

Same as above but with 4 no's of PAR Lamps i.e. one in each shelf 56000/-

STAR-124 PHOTO PERIODIC SIMULATOR 7300/-

Analogue type switches, On & off lights as per time set by the user, Min on/off period: 30 minutes Photoperiodic repeat cycle: 24 hrs, Back up auto recharging: NICAD, Powered output: Directly drives up to 100 tubes lights of 40W each, Thermal safety: 15A output, Accuracy: +-1 sec./day

STAR-125 DIGITAL PHOTO PERIODIC SIMULATOR 7300/-

Digital type switches, On & off lights as per time set by the user, Min on/off period: 30 minutes Photo periodic repeat cycle: 24 hrs, Back up auto recharging: NICAD, Powered output: Directly drives up to 100 tubes lights of 40W each, Thermal safety: 15A output, Accuracy: +-1 sec./day

STAR-126 PROGRAMMABLE PHOTO PERIODIC SIMULATOR 9200/-

With accuracy better than +-1 sec./day & facility of programming

STAR-127 SEQUENTIAL TIMER 7300/-

For operating two air conditioners of 1.5 tones each
Min. On/Off cycles: 30 minutes

STAR-128 BIOTECH ROOM TEMP. CONTROLLER: 2 SET POINT 10400/-

Temp. Range 0.1 deg C to 70 deg C, Accuracy: +-1 deg C, LED: 13 mm with PT-100 sensor, Directly output 1.5 ton AC & 4.4 KW heat convector.



STAR-122



STAR-123



STAR-125



STAR-126



STAR-127



STAR-128

CAT. NO.	DESCRIPTION OF ITEM	PRICES (PER UNIT) IN RUPEES
----------	---------------------	-----------------------------

STAR-129	MICROPROCESSOR BASED ROOM TEMP. CONTROLLER	14000/-
-----------------	---	----------------

---DO---same as STAR-127 but with programmable temperature controlling of the room.

STAR-130	ROOM TEMPERATURE CONTROLLER ANALOGUE	5500/-
-----------------	---	---------------

Range: 0-50 deg C Accuracy: +-2 deg C, for 1.5 tonne AC/4.4 KW Heater

STAR-131	HUMIDITY CONTROLLER ANALOGUE	6000/-
-----------------	-------------------------------------	---------------

Used for controlling the humidity from ambient to 90% fitted with imported humidistat.

STAR-132	HUMIDITY CONTROLLER (DIGITAL MODEL)	15200/-
-----------------	--	----------------

Control humidity up to 98% with LCD display with RH sensors and direct output for humidifier / dehumidifier of 4 KW

STAR-133	HUMIDIFIER (COOLED WATER BASE)	15000/-
-----------------	---------------------------------------	----------------

Evaporating Disc type, with open pan made of stainless steel, with water level arrangement, plug ord, etc. input water is tap water. Capacity 3-5 ltr/hr

STAR-134	HUMIDIFIER (STEAM BASED)	21500/-
-----------------	---------------------------------	----------------

Humidity is created through steam based heating system, body made of thick fiber sheet with water tank having water level arrangement & cover made of thick aluminum sheet duly powder coated. Steam is generated by stainless steel steam generator.

OPTIONAL:
Humidity controlled by imported humidistat at extra cost 4000/-

STAR-135	DE HUMIDIFIER (COMPRESSOR BASED)	
-----------------	---	--

It helps in decreasing the humidity by condensing the water on the harmatically sealed compressor in shape of ice & than converting the same in water. Provided with trolley with wheels & humidstat.
Capacity: 1.0 ton 59500/-
Capacity: 1.5 ton 67500/-

STAR-136	DE HUMIDIFIER PORTABLE MODELS (COMPRESSOR BASED)	
-----------------	---	--

With reciprocating compressor and CFC free, works on 220 volts, running temperature 5 to 35 deg C. Humidity Setting is adjustable

LOW CAPACITY RANGE:			
Model	290	318	390
Power (w)	280	420 watts	620 watts
Extraction	12 liters	18 liters	35 liters
	(32degC, 90%RH)	(30degC, 90%RH)	(30degC, 90%RH)
Weight	12 kgs	18 kgs	21 kgs
Dimen. (wxdxh)	12x8x20	14x11x23	15x12x24
Coverage	upto 150 sq.ft.	upto 250 sq.ft.	upto 350 sq.ft.
Tank Cap.	2 liters	5 liters	6.5 liters
Coolent	R 134A	R 134A	R 134A
Rates (Rs.)	38500/-	63000/-	98000/-

HIGH CAPACITY RANGE:			
Model	504	702	902
Power (w)	804	1100 watts	1700 watts
Extraction (ltrs)	50 litres	70 litres	90 litres
	(32degC, 90%RH)	(30degC, 90%RH)	(30degC, 90%RH)
Weight	30 kgs	44 kgs	60 kgs
Dimen. (wxdxh)	13x19x28	17x19x35	19x16x36
Coverage	upto 500 sq.ft.	upto 700 sq.ft.	upto 900 sq.ft.
Tank Cap.	8 liters	8 liters	8 liters
Coolent	R 22	R 22	R 22
Rates (Rs.)	121300/-	171400/-	197500/-



STAR-130



STAR-134



STAR-135



STAR-136

CAT. NO.	DESCRIPTION OF ITEM	PRICES (PER UNIT) IN RUPEES
----------	---------------------	--------------------------------

STAR-137 BIO-TECH HEAT CONVECTOR

Heavy duty input 220 V AC single phase
Pillar type rotatable in 180 deg C

4000/-

STAR-138 CONVERSION OF AN ORDINARY ROOM INTO TISSUE CULTURE ROOM

A room can easily be converted into a growth room. Generally average size 10'x10'x10' requires following facilities

	Rate for each unit
Wall insulation (Per sq.mtrs.)	2500/-
Ceiling insulation with polymer coating (per sq.mtr)	3000/-
Floor insulation polyvinyl (per sq.mtr.)	1400/-
Temp. based bio-tech air conditioners 3 nos.	37500/-
Heat convector 2 unit	5000/-
Temperature controller 1 unit	12600/-
Sequential timer 2 unit	7900/-
Tissue culture castor rack 4 unit	35900/-
Photo Periodic timer 1 unit	7900/-
Humidifier 2 unit	21500/-
Humidity controller 1 unit	15000/-
Buffer room for entering into the tissue 1 unit	62500/-
Culture room size 4'x4'x6' anodized aluminium frame with polycarbonate	

STAR-139 LUX METER

6500/-

Range upto 200000 lux., Digital size 6"x4"x1/2" Power supply D.C. 9 volts LCD display separate light sensor



STAR-139

STAR-140 MEDIA TROLLEY

9440/-

Size of 24" x 18" no. of trays 2 nos.

Tray made of stainless steel with angle Iron frame & castor wheels.



STAR-141

STAR-141 OZONE GENERATOR

Capacity mg/hr	250	500	750
Room volume cu. ft.	1500	3000	4500
Operation	Continuous	Continuous	Continuous
Variable Range	20-100%	20-100%	20-100%
Feed Gas	Air	Air	Air
Electric Power	65W	65W	65W
Weight	1.5 kg	3.5 kg	4 kg
Price	30000/-	42500/-	48000/-

STAR-142 CULTURE BOTTLE WITH LID

35/-

Capacity 125 ml. Autoclavable made of glass, Cap made of P.P.

STAR-143 PETRIDISH (DISPOSABLE)

800/-

90mm Dia, individually sterilized and packed (Rates per 100)

STAR-144 PETRIDISH (AUTOCLAVABLE)

2500/-

STAR-145 TEST TUBE CAP (Poly Propylene for covering test tubes.)

Dia 25.5 mm (Rates per 100)	200/-
Dia 18.5 mm (Rates per 100)	185/-

CAT. NO.	DESCRIPTION OF ITEM	PRICES (PER UNIT) IN RUPEES
----------	---------------------	-----------------------------

SEED & SOIL TESTING EQUIPMENTS

STAR-146 SEED GERMINATOR (SINGLE CHAMBER) 108000/-

Double walled, inner walls made of thick stainless steel & outer walls are made of thick best quality mild steel duly powder coated with off white / gray in color for longer durability, To prevent any heat loss gap between inner and outer wall are filled with 75mm thick glass wool insulation. Provided with double door, The inner door is made of thick transparent glass for the full view of inner chamber and outer door is double walled properly insulated with glass wool and fitted with best quality handle, gasket etc. Inner chamber is provided with 6 nos. perforated stainless steel trays of size 430 x 480mm. Whole unit is mounted on castor wheels for easy mobility. Temp. range is from 5 deg C to 50 deg C chamber is provided with heating as well as cooling arrangement with the help of ISI mark hermetic sealed compressor of EMERSON or any other standard make, relay, capacitor etc. temp. is controlled by digital programmable cyclic temp. indicator cum controller with PT-100 sensor. This controller is fitted with time delay to control the accuracy in maintaining the temperature. The temp. will be controlled above room temp. at high humidity. Humidity is from ambient to 95% RH (Adjustable) and is controlled by Humidistat with an accuracy of +/-3%. Humidity is generated through a S. Steel reservoir placed in the bottom/side of the main chamber and is generated through imported mist generator. Integral finned tube type. Works on 220 V 50Hz, single phase AC. Capacity of the chamber is around 300 ltrs. Inner Chamber Size: 910 x 555 x 600 mm



STAR-146

OPTIONAL

- | | |
|--|---------|
| 1. Spare tray at extra cost | 1700/- |
| 2. Humidity chamber can be supplied with Electronic digital indicator cum-Humidity controller at an extra cost | 8500/- |
| 3. PID controller at extra cost | 13900/- |
| 4. Seed Germinator provided with exterior lighting arrangement having 2 nos. tube lights on each side at the extra | 7300/- |
| 5. Seed Germinator can be provided 0-24 hours timer for regulating cyclic illumination condition at the extra cost | 3000/- |
| -----do-----timer with battery backup | 6000/- |

STAR-147 SEED GERMINATOR (SINGLE CHAMBER) HORIZONTAL TYPE 141900/-

Double walled construction, inner chamber made of thick stainless steel & outer walls are made of thick best quality mild steel duly powder coated / enamel painted for longer durability, To prevent any heat loss gap between inner and outer wall are filled with 75mm thick glass wool insulation. Inner Chamber is provided with full view glass door for inspection of material in side the chamber. The metallic door is fitted with best quality handle gasket lock etc. Chamber is provided with 6 nos. perforated stainless steel trays. Whole unit is mounted on castor wheels for easy mobility. Temp. range is from 5 deg C to 50 deg C chamber is provided with heating as well as cooling arrangement with the help of ISI mark hermetic sealed compressor of EMERSON or any other Standard make, relay, capacitor etc. Temp. is controlled by digital programmable cyclic temp. indicator cum controller with PT-100 sensor. This digital temp. controller is also provided with time delay relay. The temp. will be controlled above room temp. at high humidity. Humidity is from ambient to 95% RH (Adjustable) and is controlled by Humidistat with an accuracy of +/-3%. Humidity is generated through a S. Steel reservoir placed in the bottom/side of the main chamber and is generated through imported mist generator. Integral finned tube type. Works on 220 V 50Hz, single phase AC. Size of inner chamber width 1175mm x Depth 425 mm x Height 825

OPTIONAL

- | | |
|--|---------|
| 1. Spare tray at extra cost | 1500/- |
| 2. Humidity chamber can be supplied with Electronic digital indicator cum-Humidity controller at an extra cost | 8500/- |
| 3. PID controller at extra cost | 13900/- |
| 4. Seed Germinator provided with exterior lighting arrangement having 2 nos. Tube lights on each side at the extra | 7300/- |
| 5. Seed Germinator can be provided 0-24 hours timer for regulating cyclic illumination condition at the extra cost | 3000/- |
| -----do-----timer with battery backup | 6000/- |

CAT. NO.	DESCRIPTION OF ITEM	PRICES (PER UNIT) IN RUPEES
----------	---------------------	--------------------------------

STAR-148	SEED GERMINATOR (DUAL CHAMBER)	217500/-
-----------------	---------------------------------------	-----------------

Double walled construction, inner chamber made of thick stainless steel & outer walls are made of thick best quality mild steel duly powder coated / enamel painted for longer durability, To prevent any heat loss gap between inner and outer wall are filled with 75mm thick glass wool insulation. Both the Inner Chamber is fitted with full view glass door for inspection of material in side the chamber. The metallic door is fitted with best quality handle gasket lock etc. Provided with dual chamber of inner size 910 x 555 x 605 mm (HxWxD) each. Each Chamber is provided with 6 no's of perforated stainless steel trays. Whole unit is mounted on castor wheels for easy mobility. Both the inner chambers are provided with water reservoir (Tank) made of S. Steel and provided with constant level of water, drainage made of brass is provided. Temp. range is from 5 deg C to 50 deg C in one chamber and ambient and above in other chamber i.e. one chamber is provided with heating and cooling system, and other chamber is provided with only heating system. Cooling is done with the help of ISI mark compressor relay, capacitor etc. provided with fan cooled condenser. A digital temperature indicator cum controller with PT 100 sensor is fitted in both the chamber this temp. controller is provided with unique facility of timer delay which automatically controls the accuracy to temp. Humidity is from ambient to 90% RH (Adjustable) and is controlled by Humidistat with an accuracy of +/-3% and Humidity is generated through a S. Steel reservoir placed in the bottom of the main chamber and is generated through imported mist generator. Each chamber is fitted with motorized powerful two number fans for uniform air circulation. Each chamber is fitted with separate controls of heating & cooling temp, humidity setting. Works on 220 V 50Hz, single phase AC.



STAR-148

Same as above but provided heating and cooling system in the both chambers	257000/-
--	-----------------

OPTIONAL ACCESSORIES:

- | | |
|--|---------|
| 1. Spare tray at extra cost | 1700/- |
| 2. Humidity chamber can be supplied with Electronic digital indicator cum-Humidity controller at an extra cost | 8500/- |
| 3. PID controller at extra cost | 13900/- |
| 4. Seed Germinator provided with exterior lighting arrangement having 2 nos. tube lights on each side at the extra | 7300/- |
| 5. Seed Germinator can be provided 0-24 hours timer for regulating cyclic illumination condition at the extra cost | 3000/- |
| -----do-----timer with battery backup | 6000/- |

STAR-149	SEED DRYER (SPACE TIME)	
-----------------	--------------------------------	--

Used for the seed drying through hot air. Double walled Construction, inner chamber is made of stainless steel, outer body made of mild steel duly powder coated painted, properly insulated, provided with metallic insulated door with best quality hinges, handle synthetic gasket, etc. inner chamber is fitted with shelves, chamber is provided with heating elements made of kanthal wire with temperature. Indicator temperature from ambient to 80 deg C. controlled by digital temperature indicator-cum-controller. Provided by air circulating fan.

Size: 4'x3'x3'	127500/-
Size: 3'x2'x2'	88000/-



STAR-149

STAR-150	TESTING HUSKER	88000/-
-----------------	-----------------------	----------------

Used for easy husking of pad, either in the laboratory or in the rice mill. Husked rice the husk and the immature paddy are automatically separated by an aspirator. Single phase built in motor. Cap. On paddy 50 kg./hr. Size of rubber roller 35x100mm (width x area)

STAR-151	RICE TESTING MILL (RICE POLISHER)	63000/-
-----------------	--	----------------

Features	:	Easy maintenance, high capacity with low power consumption, Simple & trouble free mechanism.
Sample Capacity	:	800 gm approx.
Power Required	:	0.5 H.P. single phase
Dimensions	:	600 x 400 x 400 mm (LxWxH)

CAT. NO.	DESCRIPTION OF ITEM	PRICES (PER UNIT) IN RUPEES
STAR-152	GRAIN / RICE SIZING DEVICE	29000/-
Sample Capacity	: 1000 gms	
Power	: 0.25 H.P. single phase	
Dimensions	: 715 x 335 x 795 mm (LxBxH)	
Features	: Maintenance free, lower power consumption, simple & trouble free mechanism.	
STAR-153	16 GRAIN-MOISTURE METER	42000/-
Portable Rugged construction, microprocessor based, works on 12V battery direct reading of moisture percentage.		
Suitable for 16 grains i.e. battery canola corn flax, oats, rice (2), rye rice, wheat (4) rye, soyabean, sunflowers (2), sorghum, automatic compensation for variable due to temperature, with carrying case and battery		
--- do---	same as above but for 39 grains	46000/-
--- do---	same as above but with RS 232 interface	64000/-
STAR-154	SEED GRADER (LAB MODEL)	58000/-
It is a very light and precise machine and is very useful for laboratory tests. When used as a grader the top screen is used for scalping and the bottom for grading. By changing the screen size the same machine can be used as paddy cleaner. Provided with 10 nos. screens and 2 nos. trays. Provided with ½ H.P. single phase motor		
Size	80 x 54 x 75cm (approx)	
Weight	39 kg	
Operating voltage	220V, 50 Hz AC	
Screen Area	38 x 25.4cm (approx.)	
STAR-155	DIGITAL WOOD MOISTURE METER	18800/-
Model MS 7000, Range: 9% to 30% digital display, with RS 232 interface battery operated		
STAR-156	SEED CABINET (FOR STORAGE OF SEED)	
Fabricated out of PCRC sheet duly painted size of tray: 12" x 12" x 4" having 4 compartments. The cabinet is provided with index card holder. Handle and lock & key.		
CABINET SIZE:		
72" x 30" x 14" (30 tray)		68400/-
49" x 30" x 14" (20 tray)		57000/-
21" x 30" x 14" (10 tray)		46600/-
STAR-157	SEED BLOWER (DAKOTA TYPE)	45500/-
Suitable for cleaning samples of seeds & grains. Provided with ¼ H.P. motor which helps in separation by controlling the flow of air upward. Complete with 1 min. timer & on/off switch. Without tube set.		
STAR-158	SEED DISPLAY STAND	
Made of Acrylic, single type,		300/-
-do- Double grooved		500/-
STAR-159	SEED COUNTER	
Batching, repeat and multiple batches creating facility, Batch Count accurately counts a predetermined number of seeds in a single batch. Repeat Batch: Allows for the continual duplication of a single batch count, Multiple batch counts can be set to count number of batches, Display Seven Segment FND 16x1 line alphanumeric LCD Display LCD display, Seed Size: 0.5mm to 15mm, No of seeds in one batch:		
PRICE:	up to 9999 Seeds	up to 999999
	118000/-	186000/-



STAR-152



STAR-153



STAR-157



STAR-159

CAT. NO.	DESCRIPTION OF ITEM	PRICES (PER UNIT) IN RUPEES
STAR-160	ILLUMINATED PURITY WORK BOARD	8500/-
	Made of wooden board with lacquer polish & provided with milky sheet with magnifying glass & bulb etc. Light glows below the rectangular milky sheet. Cabinet is provided with drawer. Magnifying glass is adjustable and covers with the surface of milky sheet. Size: 50 x 28 x 10 cms	
STAR-161	PORTABLE BAG CLOSER	12900/-
	Single thread chain stitch, versatile, fast and economical	
STAR-162	MAIZE SHELLER	5200/-
	Manual & Hand operated, made from cast Iron duly painted --Do--with mounted on wooden stand with sieve system	7300/-
STAR-163	MAIZE SHELLER (MOTOR OPERATED)	28000/-
	Made from cast iron, duly painted, provided with spring system to accommodate all sizes of cobs. Operated through V belt, pulley etc. with electric motor 1 HP crompton make. The hole is mounted in powder coated cabinet with wheels, works on 220V single phase AC.	
STAR-164	RIFFLE DIVIDER (Medium)	14000/-
	It is used for dividing or halving dry material.	
	Width of Chutes : 2"	
	No. of Pans : 4	
	Hopper size : 19.5" x 19.5"	
STAR-165	RIFFLE DIVIDER (Small)	11900/-
	It is used for dividing or halving dry material.	
	Width of Chutes : 0.5"	
	No. of Pans : 4	
	Hopper size : 11" x 6.75"	
STAR-166	AIR SCREEN CLEANER CUM GRADER	247500/-
	Capacity 100 to 150 kg/hr. on wheat continuous cleaning variable speed motor for sieve oscillations electro magnetic vibratory feeder for smooth feeding superior, rubber ball screen cleaning mechanism on main screen. Pre aspiration and post (screening) aspiration with primary cyclone collection and secondary bag filter for dust less operation. Net Weight 250 kg.	
STAR-167	LABORATORY INDENTED CYLINDER SEPERATOR	211000/-
	Quick change, variable speed cylinder drive vibrating conveyor for lifting discharge. Two collection trays, continuous cleaning cap. Of 100-150kg./hr. on wheat feeding through electro magnetic vibratory feeder.	
STAR-168	SEED SIZE ANALYZING DIAL CALLIPER	8500/-
	Analog measuring device for measurement of length and Breadth of seeds.	
STAR-169	SEED ANALYSIS KIT	27500/-
	Seed analysis kit comprises of, Hand magnifier (4" dia), Enamelle plate 12" dia, brass seed caliper plam husket (1 no. each) dispensing balance 1 set of par parkhi (9" 12" 14"). Scoop set, measuring cylinders 910 cc, 50cc, 100 cc) petri dish packed in a compact brief case specially designed for seed / grain inspectors.	
STAR-170	TENSIOMETER	
	Standard model, fitted with suction meter 0-100 centibar vacuum, with screw able ceramic tip and translucent head assembly with insertion coring tool, tensiometer gauge recording charts and hand suction tensiometer priming syringe: Tensiometer Size	



STAR-160



STAR-161



STAR-164



STAR-170

CAT. NO.	DESCRIPTION OF ITEM	PRICES (PER UNIT) IN RUPEES
15 cm		5900/-
30 cm		6000/-
45 cm		6100/-
75 cm		6300/-
90 cm		6500/-
ACCESSORIES		
	-Tensiometer insertion coring tool	2000/-
	-Hand suction Tensiometer priming syringe	900/-
	-Tensiometer gauge recording chart (monthly)-pack of 12	200/-
SPARES		
	-Standard Model screwable ceramic tip	600/-
	-'O' Ring for Tensiometer Cup	100/-
STAR-171	A) SOIL AUGER, Dutch design one meter long with handle, 5 cm dia	4000/-
	B) SOIL AUGER Post Hole Type, one meter long with handle, 5 cm dia	3500/-
	10 cm dia	4300/-
	15 cm dia	6000/-
	Extension Rod, 1 meter long with screw type fitting	800/-
STAR-172	SOIL CORE SAMPLER	22400/-
	For taking undisturbed soil samples in stainless steel soil sample rings (60mm dia, 100cc internal volume, complete with 10 stainless steel soil sampling rings with end caps, and one nylon shock absorbing hammer	
ACCESSORIES		
	Stainless steel soil sample ring, 60mm dia, 100cc internal volume, with end caps	850/-
	Nylon headed shock absorbing hammer	2500/-
STAR-173	SOIL MOISTURE SAMPLE BOX (Aluminum)	
	Size: 3" dia x 1" height (pack of 10)	850/-
	Size: 4" dia x 1.25" height (pack of 10)	960/-
STAR-174	A) SOIL MOISTURE METER (BASIC MODEL)	13900/-
	Digital type, instruments is calibrated in percentage saturation in soil and read from 0-100%, operated on 9 volts cell digital display with an accuracy of +-1%.	
	B) Digital Model	63000/-
STAR-175	BRIX HYDROMETER WITH THERMOMETER	2500/-
	0/10, 10/20, 20/30, 30/60, AT 20C or 27.5C	
STAR-176	SOIL THERMOMETER	
	Mercury in glass, in a rigid brass stem (hard chrome plated) with pointed end for smooth entry into soil. Range 0-50 deg C. minimum division 0.20176C with fused bulb for quick response to temperature changes.	
	Stem Length 15 cm	2000/-
	Stem Length 20 cm	2100/-
STAR-177	INFILTRMETER APPARATUS	22000/-
	Provided with one inner ring 30 cm dia, one outer ring 45 cm dia (height of rings 30cm), driving plate with hammer weight and hammer guide rod, water level gauge	



STAR-172



STAR-175



STAR-176

CAT. NO.	DESCRIPTION OF ITEM	PRICES (PER UNIT) IN RUPEES
----------	---------------------	--------------------------------

OPTIONAL		
	Point Gauge, Pointer can be moved 30cm up and down, minimum count 1 mm	6500/-
	Stop watch	6000/-

STAR-178	CONE PANEROMETER (HAND OPERATED)	3000/-
-----------------	---	---------------



STAR-179	SOIL HYDROMETER (Imported, Made in U.K., 5 TO 60 gm.)	1100/-
-----------------	--	---------------



AUTOMATIC VOLTAGE STABILIZERS*

STAR-180	Triple Relay: Input 170 to 220 volts and output voltage 220 +-9%							
-----------------	---	--	--	--	--	--	--	--

0.5 KVA	1 KVA	2 KVA	3 KVA	4 KVA	5 KVA	8 KVA	10 KVA	15 KVA
2000/-	3000/-	4500/-	5500/-	6500/-	7500/-	15900/-	20600/-	34900/-

OPTIONAL		
	LOW/HIGH AUTOMATIC CUT OFF DEVICE	700/-
	TIME DELAY RELAY	650/-



STAR-179

STAR-181	SERVO VOLTAGE STABILIZERS*							
-----------------	-----------------------------------	--	--	--	--	--	--	--

Input 100V/140V/160V and output voltage 230 +-1%								
---	--	--	--	--	--	--	--	--

CAPACITY/Volt	1 KVA	2 KVA	3 KVA	4 KVA	5 KVA	7.5 KVA	10 KVA	15 KVA
100 V	21300/-	24000/-	28800/-	39000/-	44000/-	56000/-	98900/-	155600/-
140 V	19000/-	22000/-	24500/-	28300/-	34000/-	44000/-	77300/-	127300/-
160 V	17500/-	20000/-	21600/-	29000/-	33600/-	38000/-	58900/-	94600/-



STAR-182

PHARMACEUTICAL EQUIPMENTS

STAR-182	TABLET HARDNESS TESTER (MONSANTO TYPE)	2900/-
-----------------	---	---------------

STAR-183	TABLET HARDNESS TESTER (PHYZER TYPE)	7300/-
-----------------	---	---------------

STAR-184	TABLET DISINTEGRATION TEST APPARATUS	
-----------------	---	--

This Apparatus Designed for estimation of disintegration time of tablets/capsules

	MS Body	SS Body
SINGLE BASKET	11600/-	16200/-
DOUBLE BASKET	18100/-	25900/-

OPTIONAL ACCESSORIES

A. Water Bath Thermostatic control	4000/-
B. Digital Water Bath	6000/-
C. Digital Timer with time hold facility	3000/-
D. Spare Basket with hanger	2500/-

STAR-185	TABLET FRIABILITY TEST APPARATUS	
-----------------	---	--

Designed to determine the abrasion rate and impact hardness of tablets.

	MS Body	SS Body
(A) SINGLE DRUM	14000/-	16000/-
(B) DOUBLE DRUM	19600/-	25000/-

OPTIONAL ACCESSORIES

A. Digital revolution counter	6000/-
B. Spare Drum	2000/-



STAR-183

STAR-185

CAT. NO.	DESCRIPTION OF ITEM	PRICES (PER UNIT) IN RUPEES
STAR-186	DISSOLUTION RATE TEST EQUIPMENT	
	Suitable for testing of dissolution rate of tablets & capsules (Single Test)	21200/-
	---do---Same as above but with Digital RPM & Microprocessor	28900/-
	A. Three test with digital RPM, Digital temp. indicator, Digital Timer 99.9min. with alarm & motorized lifting	92500/-
	B. Specification same as above but with SIX TEST (Microprocessor Based)	152000/-
	OPTIONAL ACCESSORIES	
	A. Spare Vessel unbreakable	2000/-
STAR-187	COATING PAN (SIZE 12" DIA)	32600/-
STAR-188	POLISHING PAN (SIZE 12" DIA)	6000/-
STAR-189	TUBE FILLING MACHINE (HAND OPERATED)	18000/-
	TUBE FILLING MACHINE (FOOT OPERATED)	25000/-
STAR-190	BULK DENSITY APPARATUS	
	It is used to measure the bulk density of powders, granules and similar products. Mechanical type	
	A. Digital Bulk Density App.	32500/-
	B. Bulk Density Mechanical	22500/-
STAR-191	TUBE SEALING MACHINE (HAND OPERATED)	6000/-
STAR-192	AMPULE WASHING MACHINE WITH 8 NOS. NOZZLE & PUMP	15300/-
STAR-193	AMPULE SEALING & FILLING MACHINES	15000/-
STAR-194	COLLAPSIBLE TUBE FILLING MACHINE (HAND OPERATED)	23500/-
STAR-195	MIXING VAT WITH STIRRER with ¼ H.P. motor with 5 kg. Container	35000/-
STAR-196 (A)	ELISA READER *	247000/-
	Fully automatic, Bichromatic optic system with 4 wavelenghts, 8-channel optic fibre system, reading whole plate in 5 seconds, Can perform up to 12 different tests in one plate, Vessel: Standard 96-well microtiter plates, or strip trays, Linear Measurement Range: 0.000-3.500Abs, Single point calibration, Wavelengths 405,450,490 and 630nm (340-700nm), Accuracy: +-1%, Light Source: Tungsten lamp (8V/50W), Variable time and speed, LCD display, External printer, Memory: 500 tests and 10000 results, RS-232 and parallel port, RISC processor,	
STAR-196 (B)	ELISA WASHER *	233000/-
	Fully automatic, easy to operate, Washes flat, round and V-bottom plates and strips, Large LCD display, Large memory to store 16 pre-programmed & up to 48 user programmable wash protocols, Automatic calibration, well depth detection & last row detection, Residual Volume: <3µl (standard)<3µl (double probes), Dispense accuracy <3% cv at 300µl, Veracity: +-2% at 300µl, RISC processor	



STAR-186



STAR-190



STAR-193



STAR-194



STAR-196 (A)



STAR-196 (B)

CAT. NO.	DESCRIPTION OF ITEM	PRICES (PER UNIT) IN RUPEES
----------	---------------------	-----------------------------

STAR-196 (C) BIOCHEMISTRY ANALYZER *	221500/-
---	-----------------

Touch Screen, 300 ul Aspiration Volume, Online Graph, 1000 Test Storage Capacity, Reverse Cycle Cleaning, Dormancy Mode, Quality Control Programmer, Collated Patient Report, **Assay types:** End-point, Multi-Standard, kinetic, Two-point, Kinetic with standard, Absorbance, Sample blank and Dual wavelength., **Wavelength range:** 330-800nm; Interface light filter 340, 405, 510, 546, 578, 630nm and two free position for optional filters. **Light Source:** 6V/10W, Halogen lamp, >3000 work hours, auto dormancy function. **Flow Cell:** Ceramic frame with quartz window, 30ul flow volume. **Temperature Control:** 25, 30, 37 deg C & RT, **Aspiration Volume:** 300 3000 ul. **Measuring range:** -0.3000 3.0000 Abs. **Resolution:** 0.001 Abs (display), 0.0005 Abs (internal computing). **Accuracy:** CV <1%, Stability <0.005 Abs/H, **Storage Capacity:** 200 test items, 1060 test records, 31 days Q.C. **Man-Machine Interface:** 12 cm x 9 cm display touch screen. **Display:** Item parameters, processed data, live reaction curve, Q.C. records., **Communication:** RS232C bi-directional communication, optional MODEM. **Report Printer:** Built-in 57mm High-speed thermal matrix printer.



STAR-196 (C)



STAR-197



STAR-198/295



STAR-200/201



STAR-202



STAR-203

ANALYTICAL INSTRUMENTS *

VISIBLE SPECTROPHOTOMETERS

STAR-197 Microprocessor Spectrophotometer (Vis) Single beam with range 340-960nm with facility for auto concentration, %Transmission, absorbance and K Factor measurements. It has 16x2 line LCD data & wavelength display. Its sample holder accommodates glass cuvettes as well as glass test tubes of 10mm path length. Facility has been provided for 90 sample data storage and interface for any dot matrix centronics printer. RS 232C PC software can be provided on request at additional cost. 55000/-

STAR-198 Digital Spectrophotometer Range 340-960nm with facility for automatic concentration, %Transmission & Abs. measurements. Simultaneous display of wavelength with 1nm resolution on 3 digit LED display and data on 3½ digit LED display are available. Provision for 10mm & 50mm cuvette holders with adapter is available. A set of 10mm path length glass cuvette is available with the instrument. 50mm cuvette set can be provided at extra cost 47000/-

STAR-199 Digital Spectrophotometer Range 340-960nm with facility for automatic concentration, %Transmission & Abs. measurements. 3½ digit LED display. Simultaneous display of wave length with 1nm resolution on 3 digit LED display and data on a 3½ LED display are available. Provision for 2 position sample holder. A set of 2 glass cuvettes having 10mm special path length. Wave length resolution is 1nm. 45500/-

STAR-200 Digital Spectrophotometer Range 340-960nm with facility for automatic concentration, %Transmission & Abs. measurements. 3½ digit data display. Simultaneous display of wave length with 1nm resolution on 3 digit LED display and data on a 3½ LED display are available. Provision is made for 10mm path length, Glass cuvettes. 42000/-

STAR-201 Digital Spectrophotometer Range 340-960nm with facility for automatic concentration, %Transmission & Abs. measurements. Wavelength resolution 5nm. 3½ digit LED display with a set of 2 glass cuvettes of 10 mm path length 37500/-

STAR-202 Microprocessor Visible Spectrophotometer (Scanning) Range 320-1100nm. On-screen standard curve display on Graphic LCD, PC connectivity through USB port & direct printer connectivity using parallel port interface, Auto zero and blank. 0.1nm wavelength resolution supplied with basic software. Wavelength Scanning can be done using professional PC Software (at extra cost). 81000/-

STAR-203 Microprocessor Visible Spectrophotometer Range 325-1000 nm. 4 digit Large LED display, PC connectivity through USB port & direct printer connectivity using parallel port interface, Auto zero and blank, 2nm wavelength resolution, with basic pc software. 57900/-

CAT. NO.	DESCRIPTION OF ITEM	PRICES (PER UNIT) IN RUPEES
----------	---------------------	--------------------------------

Accessories on request

A) Set of 2 Glass cuvettes (10 mm path length)	2200/-
B) Set of 2 Quartz cuvettes (10 mm path length)	5500/-
C) Set of 2 Glass cuvettes 50 mm path length	9000/-
D) Set of 10 round glass test tubes for spectrophotometer	1200/-
E) Spare lamp 6V, 10W (Tungsten Halogen lamp)	650/-
F) Polystyrene cuvettes 10 mm path length (a set of 5)	350/-
G) Dot matrix printer for centronics interface	21000/-
H) Spectral Host PC software	14000/-
I) Scanning Professional PC software	21000/-

UV-VIS SPECTROPHOTOMETERS (Double Beam)

STAR-204 Double Beam UV-VIS Spectrophotometer Microcontroller Based Instrument having range 190 – 1100 nm, On-screen standard curve display on large 5 inches graphic LCD, 1.8 nm Spectral Bandwidth, 1200 Lines/mm Grating, 8 position auto cell changer, Wavelength Scanning, PC connectivity through USB port & direct printer connectivity using parallel port interface. It has facility for WL Scan, Kinetics, Multi Wavelength & DNA/Protein modes, (without software) **295500/-**

NOTE: This model may be purchased along with operating software only



STAR-204



STAR-205

STAR-205 UV-VIS SPECTROPHOTOMETER (Research Model) 291500/-

Optical System: Double beam, Monochromator: Holographic grating 1200 lines per nm, Spectral Bandwidth: 0.5, 1, 2, nm (variable), Wavelength Range: 190~1100nm, Wavelength Accuracy: -0.3nm (Automatic wavelength correction), Wavelength Reproducibility: 0.1nm, Absorbance, Energy, Concentration, Photometric Range: -0.3~3Abs, Baseline Flatness: +-0.0015Abs (190~1100nm), Spectral Bandwidth, 2hr warm-up), DNA/RNA. (without software)

NOTE: This model may be purchased along with operating software only



STAR-206

STAR-206 UV-VIS SPECTROPHOTOMETER (IMPORTED MODEL) 297500/-

Microprocessor based UV-VIS Spectrophotometer with high resolution LCD display, Wide wavelength range of 1,100 nm to 190 nm, High resolution 1 nm spectral bandwidth over entire wavelength range, Wavelength reproducibility of + 0.1nm, High Photometric Accuracy of + 0.002Abs at 0.5 Abs, High Photometric Repeatability of <+0.001 Abs at 0.5 Abs, Photometric; Spectrum; Quantitation; Kinetics, Time Scan, (Without Software).

NOTE: This model may be purchased along with operating software only

STAR-207 NANODROP SPECTROPHOTOMETER (IMPORTED MODEL) 297500/-

Minimum Sample Size: 1/2 µl, Sample Number: 1, Path-length: 0.5 mm, Light Source: Light emitting diodes, 260 and 280 nm, Spectral Resolution: <8.0 nm, Absorbance Accuracy: 3% (at 1.05 Abs 260 nm), Absorbance Range (10 mm equivalent): 0-30 Abs, (without software)

NOTE: This model may be purchased along with operating software only



STAR-207

STAR-208 NANODROP SPECTROPHOTOMETER SYSTEM ND-2000 395000/-

Sample Volume 0.5µl or other, Sample Number 1, Path Length: 1mm (auto ranging to 0.05mm), Silicon CCD array, Wavelength Range 190 840nm, Wavelength Accuracy 1 nm, Spectral Resolution ≤ 1Absorbance Range : 0.02-300 (10mm equivalent) (without software)

NOTE: This model may be purchased along with operating software only

STAR-209 SOFTWARE FOR OPERATING THE SPECTROPHOTOMETER

a) Software: for STAR-204	170000/-
b) Software: for STAR-205	255000/-
c) Software: for STAR-206	295000/-
D)Software for STAR-207	297500/-
e) Software for STAR-208	348000/-
f) 8 Cell changer	58000/-
g) PC for above	39000/-
h) Printer	18000/-

CAT. NO.	DESCRIPTION OF ITEM	PRICES (PER UNIT) IN RUPEES
----------	---------------------	--------------------------------

UV- VIS SPECTROPHOTOMETERS (Single Beam)

STAR-210 Single Beam Scanning UV-VIS Spectrophotometer Microcontroller Based, Range 190-1100 nm with professional wavelength scanning PC Software and 4 position cell changer. It has graphic LCD for display of kinetic, concentration graphs. PC connectivity through USB port & direct printer connectivity using parallel port interface. Extensive elaborate keyboard for ease of operator. Sample compartment can accommodate up to 100 mm cuvettes (optional). Basic modes like %T, Abs, Concentration, Kinetics available. Wavelength Scanning and DNA/Proteins can be done using advanced professional PC Software (at extra cost). **296000/-**



STAR-210

STAR-211 Single Beam UV-VIS Spectrophotometer Microcontroller Based, Range 200-1000nm with Basic PC Software and 4 position cell changer. PC connectivity through USB port & direct printer connectivity using parallel port interface. Sample compartment can accommodate up to 100 mm cuvettes (optional). Basic modes like %T, Abs., Concentration, Kinetics available. Wavelength Scanning can be done using advanced Professional Software (at extra cost) **184000/-**



STAR-211

STAR-212 Microprocessor UV/VIS Spectrophotometer (Single beam) Range 190 to 1000nm with facility for automatic concentration, %T, Abs. and K Factor measurements. It has 16x2 line LCD data display and motorized wavelength election on 4 digit LED display. It has quad sample holder with 4 position selector control for 10mm path length cuvettes. Facility has been provided for 100 sample data storage and interface with any centronic printer. RS 232C interface software can be provided on request at extra cost. A set of 2 quartz cuvettes is provided. **178000/-**



STAR-212

STAR-213 Digital UV-VIS Spectrophotometer (Single beam) Range 190 to 1000 nm with facility for automatic concentration, %Transmission & Abs. measurements. Motorised Microcontroller based wave length selection, 4 digit LED display for wavelength, 3½ digit LED data display. It has 4 position sample holder with position selector control for 10mm path length cuvettes. A set of 2 quartz cuvettes is provided. **142000/-**

Accessories on Request (For Single Beam Spectrophotometer)

a) RS-232 Computer Software	38000/-
b) RS-232 Computer Software	13000/-
c) 80 character centronics printer	21000/-
d) Quartz cuvettes 10 mm path length (set of 2)	5500/-
e) Glass cuvettes 10 mm path length (set of 2)	2200/-
f) Spare lamp (Vis) Halogen 6V 10W	700/-
g) Polystyrene cuvettes 10mm path length (set of 5)	350/-

PHOTO COLORIMETERS / HAEMOGLOBINMETER

STAR-214 Microprocessor Photo Colorimeter with 8 glass filters covering range of 400-700 nm with facility for auto concentration, %Transmission, Absorbance and K factor measurement. It has 16x2 line LCD data display. Its sample holder accommodates glass test tubes & cuvettes of 10mm path length. Facility has been provided for 100 sample data storage and interface for any centronics printer. **16000/-**

STAR-215 µP Photo Colorimeter with 8 glass filters covering range of 400 -700 nm with facility for auto concentration, %Transmission, Absorbance and K factor measurement. It has 3 digits Red LED display. Sample size 1 ml . **11500/-**

STAR-216 µP Photo Colorimeter 3 digit display, 8 glass filters covering 400-700 nm, measures Abs. and %T. soft touch keys. 1 ml sample size. **10000/-**

STAR-217 Balance Cell Colorimeter with 3 1/2 digit display, standard blue, green & red filters on a turret covering 400 to 700 nm range. **12500/-**



CAT. NO.	DESCRIPTION OF ITEM	PRICES (PER UNIT) IN RUPEES
----------	---------------------	-----------------------------

STAR-218	Digital Photo Colorimeter 8 filters, Mains operated, sample size 1ml with 2½ digit LED display.	9000/-
-----------------	--	---------------

STAR-219	Digital Photo Colorimeter 5 filters, Mains operated, sample size 1ml with 2½ digit LED display.	8300/-
-----------------	--	---------------

MAINS CUM BATTERY OPERATED PHOTOCOLORIMETERS

Battery cum Mains operated colorimeters in Digital & Analog model are also available at an additional cost of Rs.500/- While ordering, please mention specifically.

Accessories

a) Standard glass filter, Each colour	550/-
b) Test tube set of 5 for colorimeter	350/-
c) Photocell / photo diode	1500/-
d) Spare lamp 6.8V 300mA	150/-

PH METERS / POTENTIOMETERS

STAR-220	Microprocessor Based pH Meter a research grade instrument with 16x2 Line, pH, mV & Temperature display and resolution of 0.001 pH, 0.1 mV and 0.1°C. Its features include 3 point calibration, auto/manual temperature compensation up to 90 samples along with accessories, provision for external dot matrix printer. Provision for magnetic stirrer attachment is available.	28900/-
-----------------	--	----------------

STAR-221	Microprocessor Based pH Meter with 16x2 Line alphanumeric LCD display showing pH, mV, Temp, having auto temperature compensation, auto buffer recognition along with accessories. Data storage facility upto 90 samples & external printer attachment facility available.	21000/-
-----------------	--	----------------

STAR-222	µp Based pH system with 7 digit, 7 segment LED display (3 for temperature and 4 for pH/mV) with auto/manual temperature compensation, auto buffer cognition, touch keys, along with accessories.	12500/-
-----------------	---	----------------

STAR-223	Digital pH, Conductivity & Temperature Meter for measurement of pH, Conductivity & Temperature. 3½ digit LED display with pH combination electrode, conductivity cell and temperature probe (Table Model).	15000/-
-----------------	---	----------------

STAR-224	Deluxe pH Meter with auto temperature compensation, Gel filled Epoxy body combination pH electrode & RTD temperature probe, with recorder out put & slope control facility 3½ digit LED display. (Table Model)	10300/-
-----------------	---	----------------

STAR-225	Digital pH Meter with temperature compensation and combination pH electrode. 3½ digit LED display for pH measurements. (Table Model)	8500/-
-----------------	---	---------------

STAR-226	pH/mV/Conductivity/TDS/Salt/Temp Water Proof Meter (Water Proof IP 57) used to measure a wide range of pH, ORP, Conductivity, TDS, Salinity and Temperature with a replaceable electrode. It has Large LCD to display pH or ORP or Conductivity or TDS or Salinity or Temperature simultaneously. It has Automatic Temperature Compensation (ATC) and degree :C/°F switchable.	16300/-
-----------------	---	----------------

STAR-227	pH/mV/Temperature Water Proof Meter (Water Proof IP 57) measures a wide range of pH, ORP and Temperature with replaceable electrode with large LCD to display pH and Temperature simultaneously. It has automatic Temperature Compensation (ATC) and degree :C/°F switchable.	11000/-
-----------------	--	----------------



STAR-220



STAR-222



STAR-223



STAR-224/321



STAR-226



STAR-227

CAT. NO.	DESCRIPTION OF ITEM	PRICES (PER UNIT) IN RUPEES
----------	---------------------	--------------------------------

STAR-228 Digital pH Meter, (Portable) 3½ digit LCD display in ABS plastic body with touch switches and combination pH electrode. **6800/-**

STAR-229 Digital Potentiometer with 3½ digit LED display along with glass, silver, platinum and reference electrode. **10000/-**



STAR-228



STAR-229

Accessories on Request

A) pH combination electrode	1500/-
b) Gel filled epoxy body combination electrode	3000/-
c) Glass electrode	900/-
d) Silver electrode	1200/-
e) Platinum electrode	1800/-
f) Reference electrode	1100/-
g) pH electrode stand	900/-
h) Temperature probe	1400/-
i) Duracell battery or equivalent (9V DC)	450/-
j) ORP Electrode	4000/-
k) pH Electrode	4000/-



STAR-231

WATER / SOIL TESTING INSTRUMENTS

STAR-230 Microprocessor Water & Soil Analysis Kit for measurement of pH, Conductivity, ORP, TDS, Salinity, D.O & Temperature. 16x2 Line bold alphanumeric LCD display, battery cum mains operated with all accessories, fitted in a VIP portable brief case. Data storage facility up to 90 samples & external printer attachment facility available. **61000/-**

STAR-231 Water & Soil Analysis Kit 3½ digit LCD display covering 8 parameters: pH, Conductivity, TDS, Salinity, Colorimeter, Turbidity, Dissolved Oxygen & Temperature with rechargeable battery. Complete with accessories fitted in a high quality ABS brief case. **46500/-**



STAR-330

STAR-232 Water & Soil Analysis Kit 3½ digit LCD display covering 7 parameters: pH, Conductivity, TDS, Salinity, Colorimeter, Dissolved Oxygen & Temperature with rechargeable battery. Complete with accessories fitted in high quality ABS briefcase. **37000/-**

STAR-233 Water & Soil Analysis Kit 3½ digit LCD display covering pH, Conductivity, TDS, Salinity, Turbidity, Dissolved Oxygen & Temperature with rechargeable battery. Complete with accessories fitted in a high quality ABS briefcase. **31000/-**



STAR-331

CONDUCTIVITY / TDS / SALINITY METERS

STAR-234 Microprocessor pH-EC-TDS Meter with 16 x 2 Line alphanumeric LCD display showing pH, EC, TDS & Temperature. Features include auto temperature compensation, auto ranging facility in EC, 90 sample storage facility and Printer attachment facility. **32000/-**

STAR-235 Microprocessor EC-TDS-Sal Meter with 16x2 line alphanumeric LCD display showing EC, TDS, Salinity & Temperature. Features include auto temperature compensation, auto ranging facility, 90 sample storage facility and Printer attachment facility. **28000/-**

STAR-236 Microprocessor pH-EC Meter with 16x2 Line alphanumeric LCD display showing pH, EC & Temperature. Features include auto temperature compensation, auto buffer recognition in pH, auto ranging facility in EC, 90 sample storage facility and Printer attachment facility. **28300/-**



STAR-236

CAT. NO.	DESCRIPTION OF ITEM	PRICES (PER UNIT) IN RUPEES
----------	---------------------	-----------------------------

STAR-237 **Microprocessor Based Conductivity/TDS Meter** with alphanumeric 16x2 line LCD display showing Conductivity, TDS and Temperature. Features include auto ranging, selectable reference temperature and temperature coefficient. Data storage facility for 90 samples & external printer attachment facility available. **25000/-**



STAR-237

STAR-238 **Digital pH, Conductivity & Temperature Meter** for measurement of pH, Conductivity & temperature. 3½ digit LED display with pH combination electrode, conductivity cell and temperature probe (Table Model) **15900/-**

STAR-239 **Deluxe Digital Conductivity Meter** 3½ digit LED display with facility for automatic temperature compensation and digital cell constant adjustment along with conductivity cell and temperature probe **11900/-**



STAR-239

STAR-240 **Digital Cond./TDS Meter** 3½ digit LED display for measurement of Conductivity & TDS with temperature compensation facility and digital cell constant adjustment with conductivity/TDS Cell. **12000/-**

STAR-241 **Digital Conductivity Meter** 3½ digit LED display with facility for temperature compensation and digital cell constant adjustment along with conductivity cell and other accessories **9500/-**



STAR-336

STAR-242 **Digital Salinity Meter** 3½ digit LED display with salinity cell and other accessories (Table Model) **9300/-**

STAR-243 **Digital TDS Meter** 3½ digit LED display with facility for temperature compensation and digital cell constant adjustment along with TDS Cell (Table Model) **9400/-**



STAR-242

STAR-244 **pH/mV/Conductivity/TDS/Salt/Temp Water Proof Meter** (Water Proof IP 57) used to measure a wide range of pH, ORP, Conductivity, TDS, Salinity and Temperature with a replaceable electrode. It has Large LCD to display pH or ORP or Conductivity or TDS or Salinity and Temperature simultaneously. It has Automatic Temperature Compensation (ATC) and degree :C/°F switchable. **16000/-**



STAR-243

STAR-245 **Cond./TDS/Salt/Temp Water Proof Meter** (Water Proof IP 57) used to measure a wide range of Conductivity, TDS, Salinity and Temperature with a replaceable electrode. It has Large LCD to display Conductivity or TDS or Salinity and Temperature simultaneously. It has Automatic Temperature Compensation (ATC) and degree :C/°F switchable. **12000/-**

STAR-246 **Digital Conductivity Meter (Portable)** 3½ digit LCD display in ABS plastic cabinet with touch switches. Battery operated. **6500/-**



STAR-246

Note: Conductivity, TDS and Salinity meters are supplied with conductivity cell having cell constant of 1.0 approximately

Accessories on Request

a) Conductivity cell (Cell constant 1.0)	2200/-
b) Conductivity cell (Cell constant 0.5)	3000/-
c) Conductivity cell (Cell constant 0.1)	3900/-
d) Conductivity cell stand	850/-
e) Temperature probe	1500/-
f) ORP Electrode (7000 EO)	3900/-
g) pH Electrode (7000 EP)	4000/-
h) Conductivity Cell (7000 EC)	4000/-

CAT. NO.	DESCRIPTION OF ITEM	PRICES (PER UNIT) IN RUPEES
----------	---------------------	--------------------------------

COLONY COUNTER

STAR-247	Microprocessor Colony Counter 4 Digit Seven Segment, Range 0-9999 with Averaging, Count Correction and 100 sample storage facility.	11600/-
STAR-248	Microprocessor Colony Counter 3 Digit Seven Segment, Range 0-999 with Averaging, Count Correction and 100 sample storage facility.	9500/-
STAR-249	Digital Colony Counter 6 digit LED display, Range -999999	10500/-
STAR-250	Digital Colony Counter 4 digit LED display, Range 0-9999	7000/-
	Spare Pen for Colony Counter	750/-



STAR-247/248/249

KF TITRIMETERS

STAR-251	Microprocessor K.F Moisture Titrator with built-in magnetic stirrer, Auto computation of moisture in ppm, %age and mg of water. Storage of date, time batch no. & final results of 20 titrations. K.F. Reagent dispensing by motorised process. Final results are flashed on 8 digit digital display. External printer attachment facility available.	78300/-
STAR-252	Auto Karl Fischer Titrator having separate control and stirring units with array of 10 LED's, buzzer, auto zero burette, adjustable timer, dual platinum electrode and other Accessories.	27000/-



STAR-251

Accessories on Request

a) Dual Platinum Electrode	2500/-
b) Titration Vessel	1700/-
c) Dispensing Tube (set of 5)	1100/-
d) Connecting Tube (per set)	1000/-
e) Reservoir bottle (amber glass) for KF Reagent	2100/-
f) Clear glass bottle for 250 ml	1450/-
g) Teflon Adaptor each	1450/-
h) Burette Clear Glass (10ml)	2900/-
i) Reservoir Bottle (500ml)	1000/-
j) Rubber Bellow	550/-
k) Connecting Tube (one set)	650/-
l) Magnetic Capsule	550/-
m) Titration Vessel	1300/-



STAR-252

TURBIDITY/NEPHELOMETERS

STAR-253	Digital Turbidity Meter 3 ½ digit LED display. Range upto 1000 NTU/JTU.	15300/-
STAR-254	Digital Nephelometer 3 ½ digit LED display. Range upto 200 NTU.	12900/-
STAR-255	Digital Turbidity Meter 3 ½ digit LED display. Available in 4 ranges 0-2, 0-20, 0-200, 0-1000 NTU/JTU. 230VAC 50 HZ. Table Model.	17100/-



STAR-253/255

Accessories on Request

a) Test tube set of 5	700/-
b) Spare lamp 6.8V, 0.3Amp.	300/-

CAT. NO.	DESCRIPTION OF ITEM	PRICES (PER UNIT) IN RUPEES
----------	---------------------	--------------------------------

PYROGEN TESTING INSTRUMENTS

STAR-256	Digital Tele Thermometer 6 channels with 6 veterinary probes. Spare Veterinary Sensor probe.	11000/- 1350/-
-----------------	--	-------------------

DIGITAL DISSOLVED OXYGEN METER

STAR-257 **Microprocessor Based D.O Meter** with 16x2 Line alphanumeric LCD display, simultaneous display of DO & Temperature, supplied with Magnetic Stirrer. Data storage facility up to 90 samples and external printer attachment facility available. **26000/-**

STAR-258 **Dissolved Oxygen Monitor cum Temperature Indicator** with simultaneous display of DO and temperature, housed in VIP brief case, 3 ½ digit LCD display with DO and temperature probe. **21600/-**

STAR-259 **Dissolved Oxygen Analyser cum Temperature Indicator** alongwith speed regulated stirrer. Gold/Silver DO probe and RTD temperature sensor (Table Model). **14300/-**

STAR-260 **Digital Dissolved Oxygen Meter** 3 ½ digit LED display with gold/silver probe (Table Model). **12500/-**

STAR-261 **Digital Dissolved Oxygen Meter (Portable)** 3 ½ digit LCD display in ABS plastic body, touch switches along with Gold/Silver DO Probe. **11000/-**

STAR-262 **Magnetic Stirrer with speed controller** **2700/-**

Accessories on Request
Dissolved Oxygen Probe (Amperometric Gold/Silver membrane type) **4000/-**
 A set of 10 DO Membranes **300/-**

FLAME PHOTOMETERS

STAR-263 **Microprocessor Flame Photometer** with Sodium (Na) & Potassium (K) filters, upto 5 point calibration, direct readout in ppm & meq/l, auto filter selection, auto ignition, 24x4 line LCD displays, Single Aspiration, RS232 interface PC software at extra cost. Printer attachment facility with compressor and other accessories for lab & medical use. Additional Filters Calcium (Ca) & Lithium (Li) can be provided at extra cost. **68000/-**

STAR-264 **Microprocessor Flame Photometer** with Sodium (Na) & Potassium (K) filters, 3 point calibration, direct readout in ppm & meq/l, auto filter selection, auto ignition, 5 digit LED display with compressor and other accessories for lab & medical use. Additional Filters Calcium (Ca) & Lithium (Li) can be provided at extra cost. **58000/-**

STAR-265 **Digital Clinical Flame Photometer** dual channel auto ignition, single aspiration, with filters (Na & K) for medical use. Final results in meq/l. Dual 2½ digit dual LED digital display for simultaneous results along with compressor and other accessories. Additional Filters Calcium (Ca) & Lithium (Li) can be provided at extra cost. **46000/-**

STAR-266 **Digital Flame Photometer** with filters (Na & K) 2½ digit LED display (ppm) along with compressor and other accessories. additional Filters Calcium (Ca) & Lithium (Li) can be provided at extra cost. **43600/-**



STAR-257



STAR-258



STAR-260



STAR-263



STAR-264



STAR-265

CAT. NO.	DESCRIPTION OF ITEM	PRICES (PER UNIT) IN RUPEES
----------	---------------------	--------------------------------

Accessories on Request		
a)	Interference Filters (Na, K, Li, or Ca) each	6000/-
b)	Air compressor unit with regulator and pressure gauge	21000/-
c)	Capillary tubes (set of 5)	700/-
d)	Connecting Tubes set	700/-
e)	Sample beaker (set of 5)	850/-
f)	Flame host PC Software	13000/-

MICROSCOPE*

STAR-267 Coaxial Binocular Microscope having dual eye piece for vision with both eyes. It has unique features such as co-axial fine and coarse graduated focusing, graduated mechanical stage, halogen illuminator up, down movement of condenser **32000/-**

STAR-268 Binocular Microscope offers double eyepieces for vision with both eyes. It reduces eye strain and muscular fatigue **26000/-**

STAR-269 Medical Microscope is a standard laboratory microscope which eliminates the operational complexities of conventional microscope with unique features such as graduate fine motion, graduate mechanical stage Halogen illuminator up & down movement of condenser. **11500/-**

STAR-270 Junior Medical Microscope offers unique features including both coarse and fine focusing & even moving of condenser up and down. The cast metal construction is rugged and reliable –Easy to use with high performance. **7000/-**

STAR-271 Student Microscope triple revolving nose pieces with accurate paracentring. Storage 120 x 120 mm is fitted with fixed condenser and & iris diagram to control the aperture. Rugged and cast metal body added to ensure years of high performance and adjustable down stopper to prevent damage to specimen sides and objectives. **6000/-**

STAR-272 Dissecting Microscope is a compact microscope for student use. **2000/-**

Accessories on Request		
a)	Mechanical Stage	1500/-
b)	Electric Illumination	1100/-
c)	Eye pieces 5X, 10X or 15X each	850/-
d)	Objective 4X	1400/-
e)	Objective 10X	1600/-
f)	Objective 40X	1700/-
g)	Objective 100X (oil)	4000/-

STAR-273 LABORATORY BALANCES*

MODEL	CAPACITY	READABILITY	PAN SIZE (mm)	PRICE (Rs.)
PROFESSIONAL LINE ANALYTICAL BALANCE				
STAR-LB-CX 301	301 gm	0.1 mg	90	137000/-
STAR-LB-CX 220	220 gm	0.1 mg	90	104000/-
STAR-LB-CX 120	120 gm	0.1 mg	90	103000/-
STAR-LB-CX 65	65 gm	0.1 mg	90	100000/-
STAR-LB-AUX 220	220 gm	0.1 gm	80 mm	98300/-
STAR-LB-AUY 220	220 gm	0.1 gm	80 mm	94000/-
STAR-LB-AUX 320	320 gm	0.1 gm	80 mm	127000/-



STAR-267



STAR-268



STAR-269



STAR-271



CAT. NO.	DESCRIPTION OF ITEM		PRICES (PER UNIT) IN RUPEES	
BASIC ANALYTICAL BALANCES				
STAR-LB-CY304	310 gm	0.1 mg	90	104000/-
STAR-LB-CY 204	220 gm	0.1 mg	90	90000/-
STAR-LB-CY 104	120 gm	0.1 mg	90	89000/-
STAR-LB-CY 64	60 gm	0.1 mg	90	84000/-
CG HIGH PERFORMANCE SERIES				
STAR-LB-CY 120	120 gm	0.001 gm	128 x 128	42000/-
STAR-LB-CY 220	220 gm	0.001 gm	128 x 128	44500/-
STAR-LB-CY 320	320 gm	0.001 gm	128 x 128	49000/-
STAR-LB-CY 360	360 gm	0.001 gm	128 x 128	53300/-
STAR-LB-CY 420	420 gm	0.001 gm	128 x 128	59000/-
STAR-LB-CY 510	510 gm	0.001 gm	128 x 128	61900/-
STAR-LB-CY 720	720 gm	0.001 gm	128 x 128	109400/-
STAR-LB-CY 1000	720 gm	0.001 gm	128 x 128	147000/-
STAR-LB-CG 2202	2200 gm	0.01 gm	165 x 165	52600/-
STAR-LB-CG 3102	3100 gm	0.01 gm	165 x 165	55900/-
STAR-LB-CG 4102	4100 gm	0.01 gm	165 x 165	62500/-
STAR-LB-CG 6102	6100 gm	0.01 gm	165 x 165	96000/-
PRECISION PRODUCT RANGE				
STAR-LB-CTG 302	300 gm	0.01 gm	118	14500/-
STAR-LB-CTG 602	600 gm	0.01 gm	118	18000/-
STAR-LB-CTG 1202	1200 gm	0.01 gm	118	22000/-
PORTABLE SERIES				
STAR-LB-MP 200	200 gm	0.01 gm	gm, oz, dwt, GSM	6500/-
STAR-LB-MP 300	300 gm	0.01 gm	gm, oz, dwt, GSM	9000/-
STAR-LB-MP 600	600 gm	0.01 gm	gm, oz, dwt, ozt	3000/-
STAR-LB-MP 1000	1000 gm	0.1 gm	gm, oz, dwt, ozt	4500/-
STAR-LB-MP 6000	6000 gm	1 gm	gm, oz, dwt, ozt	3000/-
STAR-LB-MP 3000H	3000 gm	0.1 gm	gm, oz, dwt, ozt	8000/-
COUNTER TABLE TOP SCALES				
STAR-LB-CTG 1.2	1.2 kg	0.1 gm	290x240 mm	10000/-
STAR-LB-CTG 3	3 kg	0.1 gm	290x240 mm	11000/-
STAR-LB-CTG 6	6 kg	0.5 gm	290x240 mm	11000/-
STAR-LB-CTG 10	10 kg	0.5 gm	290x240 mm	12000/-
STAR-LB-CTG 15	15 kg	0.5 gm	290x240 mm	12000/-
STAR-LB-CTG 30	30 kg	2 gm	290x240 mm	12300/-
PLATE FORM SCALE				
STAR-LB-CTG 50	50 kg	5 gm	500x500 mm	16000/-
STAR-LB-CTG 60	60 kg	5 gm	500x500 mm	17000/-
STAR-LB-CTG 100	100 kg	10 gm	600x600 mm	19000/-
STAR-LB-CTG 150	150 kg	10 gm	600x600 mm	22600/-
STAR-LB-CTG 200/300	200/300 kg	20/50 gm	600x600 mm	27000/-
STAR-LB-CTG 500	500 kg	50 gm	750x750 mm	26700/-
STAR-LB-CTG 1 T	1 Ton	200 gm	1000x1000 mm	35500/-
STAR-LB-CTG 1T4	1 Ton	200 gm	1000x1000 mm	73000/-
STAR-LB-CTG 2T4	2 Ton	500 gm	1500x1500 mm	83000/-
ULTRASONIC CLEANER				
STAR-LB-CD 4800	1.4 ltr	Pure S.S.	230x180x160 mm	9000/-
STAR-LB-CD 4820	2.5 ltr	Pure S.S.	26x26.5x13.5 mm	13000/-
STAR-LB-CD 5820	5 ltr	Pure S.S.	240x140x150 mm	53000/-
STAR-LB-CD 10820	10 ltr	Pure S.S.		83000/-



CAT. NO.	DESCRIPTION OF ITEM	PRICES (PER UNIT) IN RUPEES
----------	---------------------	--------------------------------

STAR-274 CARBON DIOXIDE INCUBATOR / CO2 INCUBATOR

With the solid double walled door, a full view inner plexi-glass door enables inspection of specimens inside the chamber without disturbing the process temperature, The excellent quality of magnetic gum packing for the external door, User-oriented design of shelves makes you adjust each space of shelves without difficulty, With forced air circulation at triple walled back, it maintains optimum uniformity of distribution of temperature, High grade **Polyurethane Foam (PUF) insulation** between outer and inner chamber for minimal thermal loss, Caster wheel mounted exterior cabinet is made of steel sheet duly powder coated, Inner chamber and trays are made of stainless steel sheet (SS-304 grade), Front double walled door is provided with lock and key arrangement, Door operated illumination lamp is fitted inside the chamber for easy visibility, **Safety thermostat to prevent overheating**, Fitted with **MICROPROCESSOR BASED DIGITAL TEMPERATURE INDICATOR-CUM-CONTROLLER** to control the temperature from 5°C to 60°C ±0.5°C, **CFC FREE ECO FRIENDLY COMPRESSOR**, Inner chamber size: 505 x 415 x 830mm, Capacity: 171 ltrs. (Volume: 6.1 cu.ft), Fitted with inlet nozzle for monitoring CO2 gas or CO2 gas/air mixture, To work on 220/230 volts AC,

Supplied complete with CO2 gas cylinder (Capacity: 9 ltrs) with regulator and all rubber pipes and with Automatic Voltage Stabilizer 3.0 KVA **193000/-**

OPTIONAL:

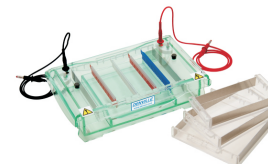
Microprocessor Based Controller for monitoring of CO2 **148000/-**



STAR-274

STAR-275 (A) HORIZONTAL ELECTROPHORESIS SYSTEM (IMPORTED MODEL)*

Dimensions (LxWxH):	25 x 9.5 x 6 cm	30 x 13 x 6	27 x 18 x 9	27 x 18 x 9	48 x 26 x 10.5
Gel Size (WxL):	4.8 x 7.5 cm	7.8 x 10.0	12x12/12x6/6x6	13x13/7.8x10/4.8x7.5	20x25/20x12.5/20x6.25
Comb Wells:	3, 5, 9	10, 15	3/6/8/11/13/18/25	13/26/10/15/5/3	22/24/36/44
Buffer requirements:	150 ml	400	550	600	1700
Weight:	0.7 kg	1.1	0.9	2.8	3.0
Runs samples upto:	9 (maximum)	15 (maximum)	25 (maximum)	26 (maximum)	44
PRICE	18500/-	27000/-	31000/-	45000/-	72000/-



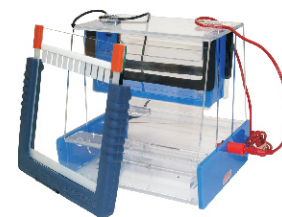
STAR-275(A)

STAR-275 (B) HORIZONTAL ELECTROPHORESIS UNIT (INDIAN MODEL)* 12000/-

College model, economy range, Submarine Electro-phoresis Unit/Agrose Gel/Poly Acrylamide Gel Electrophoresis (Mini Size). The unit is moulded of transparent polycarbonate to avoid leakage. The unit include buffer chamber, safety lid with cables, and Comb 9 Wells - 10 Teeth, Comb 11 Wells - 12 Teeth, Comb 13 wells - 14 Teeth

STAR-276 (A) VERTICAL GEL ELECTROPHORESIS (IMPORTED MODEL)*

Tank Dimension (LxWxH) cm:	15.5 x 12 x 13	26.5 x 17 x 23	32.8 x 20 x 24
Gel Size (WxL) cm:	8.2 x 8.5	12 x 14	7 x 19.5
Gel thickness (mm):	0.75, 1.0, 1.5	1-1.5	1-1.5
Comb Wells:	11, 15	16, 23	21, 35
Gel capacity:	2	2	2
Buffer requirement (ml):	750	1200	2200
Weight (kg):	2.1	5.8	10.5
PRICES	80000/-	128000/-	151000/-



STAR-276(A)

(B) VERTICAL ELECTROPHORESIS SYSTEM (INDIAN MODEL)* 17000/-

College model, economy range, Unit is molded of transparent Polycarbonate to avoid leakage. The unit is based on Acrylic sheet fitted with 3 leveling screws. Acrylic cover. Dimensions outer 15 x 18 x 15 cm (LxWxH), Gel Size: 8 x 7 cm (1 gel), Buffer Required: 100 + 150 ml, Platinum Electrodes: 2 Nos. Wires, Glass plate-1 and 1 notched rectangular, One set spacers of 1.0mm, 1.5mm-4 Pcs. set of Nylon moulded combs of 7 wells & 10 wells in 0.1 mm and 1.5mm thickness

CAT. NO.	DESCRIPTION OF ITEM	PRICES (PER UNIT) IN RUPEES
----------	---------------------	--------------------------------

STAR-277	POWER SUPPLY*	
-----------------	----------------------	--

A) UNIVERSAL POWER SUPPLY (IMPORTED MODEL)		
---	--	--

Type of output:	Constant Voltage, Current & Power	Constant Voltage, Current & Power
Output Range:	5-300V, 1-400mA, 1-120W	10-600V, 1-500mA, 1-300W
Resolution:	Voltage 1V, Current 1mA Power 1W	Voltage 1V, Current 1mA Power 1W
Time Range:	1min-9hr 9min	1 min-9hr 9 min
Display:	LCD (128x 64 pixels)	LCD (128 x 64 pixels)
Output Pack:	4	4
PRICES	94000/-	95000/-

B) BASIC POWER SUPPLY*		
-------------------------------	--	--

Type of output:	Constant - Voltage, Current	Constant Voltage,
Output Range:	5-300V, 1-200mA, 60W	5-600V, 1-200mA, max 120W
Resolution:	Volt 1V, Current 1mA	Volt 1V, Current 1mA
Time Range:	1min-9hr 9min	1 min-9hr 9 min
Display:	LED	LED
Output Pack:	2	2
PRICES	76000/-	96000/-

(c) POWER SUPPLY (INDIAN MODEL) ANALOG FIXED*		6500/-
--	--	---------------

LED display, Analog Model with fixed 250mA and also fixed voltage of 50V, 100V, 150V, 200V and 250V. It is recommended for mini Horizontal and mini Vertical Electrophoresis apparatus.

(d) POWER SUPPLY, DIGITAL VARIABLES (INDIAN MODEL)*		21000/-
--	--	----------------

Variable 0.300V, 0-200mA, with digital timer, constant current, constant voltage, digital display of voltage and mA. It is recommended for both mini Horizontal and mini Vertical electrophoresis Apparatus.

STAR-278	E-BLOTTER COMPLETE SYSTEM (IMPORTED MODEL)*	48000/-
-----------------	--	----------------

Recommended particularly for blotting of large molecules (>10-20 kDa, depending on the proteins characteristics) or of proteins which are difficult to transfer with other blotting techniques. Gel Size (WxL): 10 x 10 cm, Buffer requirement: 750 ml, Body Tank: 1, Transfer Clapboard: 2, Fiber Gaskets, Electrical Cables:



STAR-278

STAR-279	UV-TRANSILLUMINATOR*	
-----------------	-----------------------------	--

(A) COLLEGE MODEL TRANSILLUMINATOR		33000/-
---	--	----------------

Wavelength: 312nm fixed, No of UV tubes: 8 imported, Wattage: 8 Watts, Detection limit: 200 ng, Blue Plate Area: 185 x 185 mm approx., Body: MS with powder coated, UV protection shield



STAR-279

(B) STANDARD TRANSILLUMINATOR		
--------------------------------------	--	--

The standard UV transilluminator is both compact & economical for laboratories. The fully adjustable UV safety screen can be positioned to suit the operator's viewing angle against exposure to harmful UV rays. The High/Low intensity selection is ideal to switch from short gel visualization to longer preparative work.

nm	Filter (cm)	Tubes	Intensity ($\mu\text{W}/\text{cm}^2$)	Price
254	15 x 15	6 x 8 watt	7000	110700/-
254	20 x 20	6 x 8 watt	7000	121000/-
312	15 x 15	6 x 8 watt	10000	110700/-
312	20 x 20	6 x 8 watt	10000	121000/-
365	20 x 20	6 x 8 watt	7000	121000/-

CAT. NO.	DESCRIPTION OF ITEM	PRICES (PER UNIT) IN RUPEES
----------	---------------------	--------------------------------

(C) WHIT LIGHT TRANSILLUMINATOR 99300/-

White light transilluminators offers uniform light diffusion and variable intensity control. They are designed for Protein stained Gels (silver or coomassie blue), Autoradiographs, X-ray film and microtiter plates, Hi/Low intensity, Sample surface: 20 x 35 cm, Tubes (μ W/cm²): 2x15Watt + 2x6 watt

(D) UV / WHITE LIGHT TRANSILLUMINATOR 190000/-

The two in one model, featuring UV and White light ideal for RNA & DNA visualization through UV light and Protein Gels, Autoradiograms or Microtitration plates through white light. The UV/White light tables feature two 20x20 cm illumination areas. 312nm/white light, Sample surface: 2 (20x20) cm, UV/WL tubes: 6x8/2x8 watt nm, Intensity (μ W/cm²): 10000

PROJECTOR / INTERACTIVE WHITE BOARD*

PCR THERMAL CYCLER*

MG25+ 192000/-

Block Capacity: 0.2ml x 25wells + 0.5ml x 16wells, Block Temperature Range: 0 deg C ~ 99.9 deg C, Max. Block Heating Rate: 3 deg C/s, Max. Block Coating Rate: 2 deg C, Block Uniformity: < +/- 0.2 deg C, Block Accuracy: < +/- 0.2 deg C, Mode of Temp. Control: Sim-Tube & Block mode, **LCD blue Display:** Yes, Number of Programs: 100, Max No. of Cycle: 99, Time Increment/Decrement: 1 ~ 60s, Temp. Increment/Decrement 0.1 ~ 10.0 deg C

MG48+ / MG96+ 248000/-

Block Capacity: 0.2ml x 48wells + 0.5ml x 48wells / 0.2ml x 96wells + 0.5ml x 77wells, Block Temperature Range: 0 deg C ~ 99.9 deg C, Max. Block Heating Rate: 3 deg C/s, Max. Block Coating Rate: 2 deg C, Block Uniformity: < +/- 0.2 deg C, Block Accuracy: < +/- 0.2 deg C, Mode of Temp. Control: Sim-Tube & Block mode, **LCD blue Display:** Yes, Number of Programs: >100, Max No. of Cycle: 99, Time Increment/Decrement: 1 ~ 60s, Temp. Increment/Decrement: 0.1 ~ 10.0 deg C

MG48G / MG96G 270000/-

Block Capacity: 0.2ml x 48 wells + 0.5ml x 48 wells / 0.2ml x 96wells + 0.5ml x 77wells, Block Temperature Range: 0 deg C ~ 99.9 deg C, Max. Block Heating Rate: 3 deg C/s, Max. Block Coating Rate: 2 deg C, Block Uniformity: < +/- 0.2 deg C, Block Accuracy: < +/- 0.2 deg C, Mode of Temp. Control: Sim-Tube & Block mode, **Large LCD blue Display:** Yes, Number of Programs: >125, Max No. of Cycle: 99, Time Increment/Decremen: 1 ~ 60s, Temp. Increment/Decremen: 0.1 ~ 10.0 deg C, Gradient Accuracy: <+/-0.3 deg C, Gradient Uniformity: <+/-0.3 deg C, Temp. Range for Grade: 30 deg C - 99 deg C, Temp. Differential Range: 1 deg C - 30 deg C

MGL96+

Block Capacity: 96wells x 0.2ml + 77 wells x 0.5 ml, **LCD Display: 5.7" diagonal illuminated color display, USB Flash Drive: Unlimited with USB flash drive expansion, Ports: USB 2.0 Host and Rs232**, Block Temperature Range: 0 deg C ~ 100 deg C, Max. Block Heating Rate: 3 deg C/s, Max. Block Coating Rate: 2 deg C, Block Uniformity: < +/- 0.2 deg C, Block Accuracy: < +/- 0.2 deg C, Mode of Temp. Control: Sim-Tube & Block mode, Ramping Rate adjustable, Memory: 120 programs Installed, unlimited with US





Space Time
An 9001:2000

83



CAT. NO.

DESCRIPTION OF ITEM

PRICES (PER UNIT)
IN RUPEES

TERMS AND CONDITIONS:

PRICES: are Ex-Works Meerut. Packing, Forwarding, Freight, Octroi, Insurance and any other incidental charges shall be charged extra as applicable at the time of supply.

SALES TAX: (Central/Local/VAT) VAT shall be charged extra as applicable at the time of supply. Any other taxes/duties/levies imposed by the Government shall also be charged from the date of such imposition.

PACKING: of material shall be done in transport-worthy condition and our responsibility ceases once the good handed over to the carriers. Loss or damages shall be claimed with appropriate authorities only. Packaging charges shall be charged extra as actual.

PAYMENT: 50% value of goods shall accompany the order. Balance against documents through Bank. If the documents are not released within 15 days of receipt of intimation from the Bank, an interest @24% p.a. shall be charged.

SPECIFICATIONS: Specifications*, Design & Construction as per Catalogue/Price List shall be strictly adhered to, but due to regular research & up gradation process we reserve the right to make changes without any prior notice and without any binding.

ORDERS: Orders should be send in writing accompanying C-Form and by quoting relevant Cat. No, Sales Tax Registration No., TIN No., Mode of Transport, Delivery, Place and Period, etc.

RATES: Rates are subject to changes without any prior intimation.

LAB FITTING: All carpentry, masonry or electrical job require for the fitting of equipment shall be done by customer only at their own cost.

JURISDICTION: All Disputes are subject to Meerut Jurisdiction Only.

DELIVERY PERIOD: All Orders are booked against the minimum delivery period of 4-6 weeks.

NOTE: we reserve the right to supply the Order in full or part, with or without change of specifications without any prior note.

Great Innovations to Protect

* Specifications & brand of few equipment may change without any prior notice. Please enquire before ordering.